

## 2. NEW INFRASTRUCTURE PROGRAM TO SUPPORT ESSENTIAL SERVICES, HOUSING AND COMMUNITIES

This Budget continues the New South Wales Government's substantial infrastructure program designed to improve essential services, housing, and community support throughout the state. Key components of this program include significant investments in both new and improved infrastructure with a strong focus on increasing housing supply.

This year, the New South Wales Government's infrastructure initiatives continue to prioritise the growth and sustainability of our state by deploying investments in growing communities which promote affordable housing.

In addition, the program dedicates substantial resources to improving our transport systems, investment in new schools and hospitals, and the energy transition we need to secure a clean and sustainable future.

Highlights of the Government's current infrastructure pipeline include:

- \$62.9 billion for public transport and infrastructure
- \$13.4 billion for health infrastructure
- \$9.5 billion for schools and skills infrastructure
- \$7.1 billion to build stronger communities
- \$6.1 billion for social housing
- \$4.5 billion for Climate Change, Energy, the Environment and Water infrastructure.

The \$119.4 billion Essential Infrastructure Plan delivers new investment in schools and hospitals, without privatising public assets.

## 2.1 Climate Change, Energy, the Environment and Water

---



The Department of Climate Change, Energy, the Environment and Water works to protect the State's natural resources, environment and heritage.

It leads the way on climate change, driving the sustainable transition to a net zero economy, powered by affordable, reliable, and clean energy.

\$4.5  
billion

Capital  
Expenditure  
to 2027-28

\$2.0  
billion

Capital  
Expenditure  
2024-25

The portfolio works to conserve and protect the state's natural environment. It manages the NSW national park estate, including its rich and diverse biodiversity and First Nations cultural heritage for future generations.

It progresses the sustainable management of water resources across the state, to support the environment, communities and industry which is also an integral part of the portfolio.

This Budget includes capital investment of \$4.5 billion in Climate Change, Energy, the Environment, Heritage and Water Portfolios over the four years to 2027-28. The commercial water entities of Sydney Water Corporation, Hunter Water Corporation and Water NSW propose to invest a further \$17.6 billion over the four years to 2027-28 to support growth and to sustain reliable water and wastewater services for customers. Additional information can be found in the public financial corporations project listings in Chapter 5 of this Budget Paper.

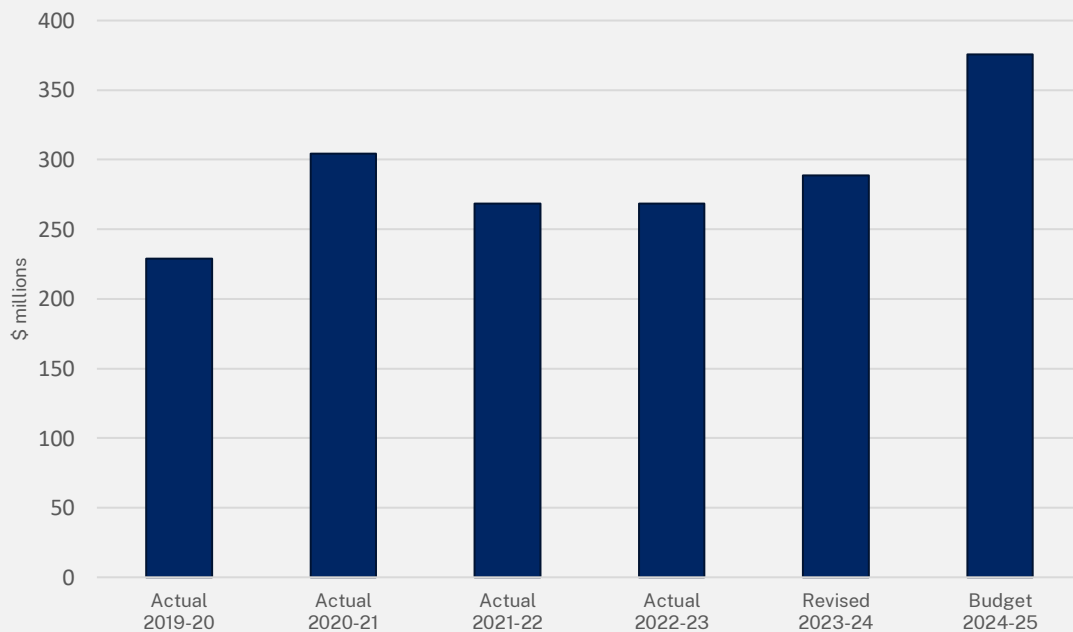
**Box 2.1: Renewable Energy Zones**

Renewable Energy Zones (REZs) are the equivalent of modern day power stations, bringing together renewable energy, storage and transmission at the scale needed to maintain a reliable energy system.

The five Renewable Energy Zones; Central West Orana, New England, South West, Hunter Central Coast and Illawarra, will group new wind and solar power generation and storage where it can be efficiently stored and transmitted across New South Wales. The REZs will keep NSW electricity reliable and affordable as coal-fired power stations retire, delivering large amounts of new energy to power our regions and cities.

In May 2024, EnergyCo secured a \$490.0 million investment in the Central-West Orana REZ. The finance is from the Clean Energy Finance Corporation Rewiring the Nation Fund. The Clean Energy Finance Corporation investment will support timely development of the Central-West Orana REZ, critical to delivering lower cost renewable energy to the National Electricity Market.

*Chart 2.1: Climate Change Fund Spend 2019-20 to 2024-25*



The Transmission Acceleration Facility (TAF) has been established to develop transmission projects to the stage where they can be delivered by a private operator who will pay for the costs incurred to date. It also enables community and employment benefits from the REZs to be brought forward to support host community engagement and outcomes. The estimates over four years to 2027-28 do not include the anticipated receipts from the recycling of the State’s investment to develop the Central West Orana (CWO) REZ project. The cash receipt from the anticipated transaction with the Network Operator for the CWO REZ will be budgeted for when the transaction is finalised, as will be the case for other major asset transactions initiated as part of the energy transition.

### **Box 2.2: Electric Vehicles Charging Infrastructure**

The NSW Government has committed to increase electric vehicle (EV) sales to more than 50.0 per cent of new cars sold in New South Wales by 2030. More electric vehicles will drive down the cost of transport for NSW households and assist New South Wales to meet its net zero emissions targets. The Government's commitment includes:

- \$149.0 million to co-fund EV fast chargers which reduces the time taken to top up batteries
- \$105.0 million to support business and local government fleets to procure EVs and charging infrastructure
- \$20.0 million to co-fund EV destination chargers at regional tourist destinations in New South Wales
- \$10.0 million to co-fund EV kerbside chargers in metropolitan New South Wales to support EV drivers without access to off street parking
- \$10.0 million to co-fund EV ready buildings to retrofit EV infrastructure in apartment buildings.

The NSW Government is committing a further \$263.5 million to underpin the rollout of an updated NSW EV Strategy.

### **Box 2.3: Regional Water Security**

The 2024-25 Budget provides more than \$362.3 million over four years to improve water security for regional communities and industries, as well as improving environmental water quality for recreation, river health and wildlife habitat. This work, co-funded by the Australian Government, includes projects for water recovery and improving river health across the Murray-Darling Basin. Key capital investments include:

- \$281.6 million over three years to improve river flow management, replace ageing infrastructure and support native fish populations in the Murrumbidgee and Murray regions, as part of the Sustainable Diversion Limit Adjustment Mechanism (SDLAM) Acceleration Program
- \$34.7 million over three years to replace pump stations along the Nyngan to Cobar pipeline
- \$23.7 million in 2024-25 for the Northern New South Wales Fish Passage to remove river constraints to boost native fish populations in Northern New South Wales, funded through the Northern Basin Toolkit program
- \$22.3 million in 2024-25 to upgrade water security in Wilcannia and enhancing cultural connection through the development of a Community River Place.

*Table 2.1: Key new Climate Change, Energy, the Environment and Water projects commencing in 2024-25 included in this Budget*

Project	Estimated total cost	Expenditure over four years to 2027-28
<b>Port to Project – Road Upgrades and Newcastle Port Logistics Precinct</b>		
Infrastructure upgrades of regional roads and the Newcastle Port to enable the safe and timely transport of large renewable energy equipment components. This equipment will support REZ projects and other NSW Roadmap and Commonwealth energy projects in Regional NSW. This project includes storage of the equipment portside prior to transporting.	\$128.5 million	\$128.5 million
<b>National Parks Visitor Infrastructure Management</b>		
Investing in National Parks visitor facilities, so they are safe, accessible, and open, and ensuring increasing visitor demand can be managed sustainably.	\$33.4 million	\$33.4 million

*Table 2.2: Key Climate Change, Energy, the Environment and Water projects continuing in this Budget*

Project	Estimated total cost	Expenditure over four years to 2027-28
<b>Transmission Acceleration Facility</b>		
The Facility will help fast-track critical energy infrastructure to deliver lower cost and more reliable energy for all NSW consumers including:		
<ul style="list-style-type: none"> <li>Central-West Orana Renewable Energy Zone</li> <li>New England Renewable Zone and</li> <li>Hunter Transmission Project.</li> </ul>	\$4.4 billion	\$3.1 billion
The Transmission Acceleration Facility is a \$2.0 billion recycling funding facility where development funding is provided for projects and host community and employment benefits from the Facility and is recovered from private investors thereby replenishing the Facility to support further projects until final repayment in 2040.		
<b>Sustainable Diversion Limit Adjustment Mechanism (SDLAM)</b>		
An Australian Government funded program improving river flow management, replacing ageing infrastructure and supporting native fish populations in the Murrumbidgee and Murray regions.	\$311.0 million	\$281.6 million
<b>National Parks Strategic Fire Trail Network Upgrades</b>		
Upgrade of strategic fire trails in national parks, to support the effective management of bushfires to prevent loss of life, property, and biodiversity.	\$172.8 million	\$71.7 million
<b>Improving Access to National Parks</b>		
Improving access to the natural beauty of NSW national parks and supporting local tourism by upgrading and extending walking trails and improving visitor infrastructure and facilities.	\$149.6 million	\$6.9 million
<b>Reserve Establishment and Activation</b>		
Continuing investment of a fund to support the establishment and activation of reserves, fill critical gaps in the national parks estate and enhance regional tourism and economic benefits.	\$120.0 million	\$8.5 million
<b>Great Walks: Multi-day Walking Experiences</b>		
Creating multi-day walking trails: the Gardens of Stone Walk and the Great Southern Walk and Illawarra Mountain Biking Network.	\$80.4 million	\$66.2 million

Project	Estimated total cost	Expenditure over four years to 2027-28
<b>Upgrades to National Parks Firefighting Capacity</b>		
Upgrading the National Parks and Wildlife Service firefighting capacity to support hazard reduction activities across the State's national parks and minimise bushfire risk to life, property, and the environment.	\$94.8 million	\$34.5 million
<b>Dorrigo Escarpment Walk and the Arc Rainforest</b>		
Creating a four-day, three-night walk through World Heritage rainforest and towering eucalypts that will feature dramatic escarpments and scenic waterfalls. Working in partnership with local First Nations groups, capital works include a new visitor centre, elevated treetop walkway and visitor accommodation.	\$56.4 million	\$52.2 million
<b>Koala Strategy</b>		
The NSW Koala Strategy will help secure koalas in the wild by protecting, restoring and improving the condition of koala habitat, supporting local communities to conserve koalas, improving koala safety and health, and building knowledge to improve koala conservation.	\$52.8 million	\$25.9 million
<b>Georges River Koala National Park</b>		
The establishment of a new Georges River Koala National Park to protect one of the largest koala populations in metropolitan Sydney. The project includes construction of visitor infrastructure such as walking and cycling paths, amenity blocks and carparks to support recreational activities.	\$47.9 million	\$26.1 million
<b>Nyngan to Cobar pump station replacement</b>		
Replacing pump stations along the Nyngan to Cobar pipeline, supporting communities and industries in central NSW.	\$38.9 million	\$34.7 million
<b>Northern NSW Fish Passage</b>		
Removing river constraints to boost native fish populations in Northern NSW, funded through the Northern Basin Toolkit program.	\$37.6 million	\$23.7 million
<b>Me-Mel (Goat Island) Remediation</b>		
Remedial works to clean up and repair the Me-Mel island in Sydney Harbour ahead of transferring ownership back to traditional owners. Works will include the repair of seawalls and buildings, improved wharf access, upgraded services and the removal of contaminants such as asbestos and lead.	\$36.7 million	\$34.7 million
<b>Great Koala National Park</b>		
The capital component of an \$80.0 million investment to create the Great Koala National Park to preserve large tracts of koala habitat on the Mid-North Coast of New South Wales.	\$28.5 million	\$28.5 million
<b>Cumberland Plain Conservation Plan</b>		
To deliver biodiversity offsets conserving biodiversity in Western Sydney under the Cumberland Plain Conservation Plan.	\$28.0 million	\$28.0 million
<b>Wilcannia Water Security</b>		
Upgrading water security in Central Darling Shire, as well as delivering job training and enhancing cultural connection through the development of a Community River Place.	\$27.5 million	\$22.3 million

Project	Estimated total cost	Expenditure over four years to 2027-28
<b>Air Quality and Environmental Monitoring Program</b>		
Critical works to expand and maintain the NSW air quality monitoring network, and to support essential computing infrastructure enabling real time air quality alerts and forecasting for government, communities, and individuals.	\$23.0 million	\$10.3 million
<b>National Parks Radio Network – Migration to the Public Safety Network</b>		
Enabling the successful migration of the National Parks and Wildlife Service’s radio network onto the NSW Public Safety Network. The Public Safety Network consolidates standalone radio networks of over 70 NSW Government agencies onto one network, as part of the NSW Government’s response to the NSW Bushfire Inquiry.	\$22.2 million	\$17.0 million
<b>Digital Upgrade to the Biodiversity Offset Scheme</b>		
A digital architecture upgrade and re-design to enable digital infrastructure to meet the demand of the Biodiversity Offset Scheme.	\$17.2 million	\$15.0 million
<b>Wolli Creek Regional Park</b>		
Incorporation of additional land within Wolli Creek Regional Park to protect the diverse ecosystem and threatened species within the park. The park provides valuable open space in the urban environment of inner South-West Sydney.	\$8.8 million	\$8.8 million
<b>Protect Koalas of Southern Sydney</b>		
The transfer of wildlife corridors in Woronora Heights to support critical koala habitat and the movement of wildlife.	\$6.2 million	\$6.2 million
<b>Lord Howe Island – Marine Infrastructure</b>		
Providing for the continuation of a marine freight service that meets biosecurity standards for a World Heritage listed site and meets essential community needs.	n.a.	n.a.
<b>Lord Howe Island – Waste Management Facility Upgrade</b>		
Upgrade to the existing Waste Management Facility on Lord Howe Island to ensure enduring compliance with legislative and regulatory requirements.	n.a.	n.a.

Pages 4-8 to 4-12 of Chapter 4 of this *Infrastructure Statement* list the major capital projects and minor works for the Climate Change, Energy, the Environment and Water agencies, including the ETC, estimated expenditure to 30 June 2024, and 2024-25 allocation.

## 2.2 Communities and Justice



Communities and Justice agencies provide community services that contribute to a safe and just New South Wales. They ensure the operation of an efficient and effective legal system, protect children and families, and respond to natural disasters and emergencies.

\$7.1 billion

Capital Expenditure to 2027-28

\$2.0 billion

Capital Expenditure 2024-25

The infrastructure program will support these agencies to promote public safety, reduce reoffending, support community harmony and social cohesion.

This Budget includes capital investment of \$7.1 billion in Communities and Justice over the four years to 2027-28.

### Box 2.4: Investment in Social Housing

The 2024-25 Budget provides significant investment for the delivery of more social housing, including to support women-led households leaving domestic and family violence. More social homes are needed urgently to address historic underinvestment and ensure that everyone has a safe and affordable place to call home.

This investment will help tackle the State's housing crisis and assist New South Wales in meeting its commitments under the National Housing Accord to build more homes.

The Budget includes:

- \$5.1 billion over four years for new social housing . This will fund the land purchase and construction of 8,400 new social homes, which includes 2,200 replacement dwellings with a focus on housing for women leaving domestic violence
- \$810.0 million for critical maintenance and minor works that bring homes back online and prevent disrepair
- \$202.6 million over four years to the Aboriginal Housing Office to support critical capital maintenance of First Nations social homes.

### Box 2.5: Badgerys Creek Fire Station

This Budget commits an additional \$15.4 million in capital funding to purchase land and build a new fire station at Badgerys Creek to service the Western Sydney International Airport (WSI) and Aerotropolis precinct. Fire and Rescue NSW (FRNSW) will also purchase three new appliances, including a pumper, rescue pumper, and a heavy rescue appliance.

The new three-engine bay fire station will operate 24/7, 365 days a year and position valuable firefighting and specialist rescue resources in Western Sydney.

The Aerotropolis and surrounding areas will undergo substantial and rapid transformation in the coming years with the increased industrial, commercial, residential and transport infrastructure and development bringing unique and significant emergency services delivery challenges. The funding will ensure resources are available to respond to the emerging risks associated with fire, rescue, and hazmat incidents that may arise in this growth corridor.

The fire station and appliances will also provide complementary support to the Aviation Rescue and Firefighting Services when responding to any aircraft incidents.



*Table 2.3: Key new Communities and Justice projects commencing in 2024-25 included in this Budget*

Project	Estimated total cost	Expenditure over four years to 2027-28
<b>New Social Housing</b>		
\$4.0 billion over four years for new social housing. This will fund the land purchase and construction of 5,400 new social homes, which includes 1,300 replacement dwellings, by Homes NSW in Department of Communities and Justice.	\$4.0 billion	\$4.0 billion
<b>Land and Housing Corporation (LAHC) Capital Maintenance</b>		
\$1.3 billion of NSW Land and Housing Corporation expenditure over four years to support capital maintenance of the existing social housing portfolio. \$700.0 million of this will be met from proceeds of land transfers from Homes NSW in the Department of Communities and Justice, sourced from the \$4.0 billion new funding for new social housing.	\$1.3 billion	\$1.3 billion
<b>Aboriginal Housing Office (AHO) Capital Maintenance</b>		
Capital maintenance and upgrades of Aboriginal Housing Office's existing social housing stock, including roof replacements, recladding and window replacements, backlog maintenance on dwellings in critical need of repair.	\$105.6 million	\$73.1 million
<b>Paging Network Refresh</b>		
This project ensures the continuation of vital messaging functionality for the Rural Fire Service and other emergency service organisations responding to critical incidents and disasters across the State.	\$19.9 million	\$19.9 million
<b>Badgerys Creek Land and New Fire Station</b>		
Purchase land and build a new 24-hour fire station to service the new Western Sydney Airport and the surrounding Aerotropolis precinct, including its transport infrastructure and industrial, commercial and residential assets. The new fire station will be equipped with three engine bays to house new Pumper, Rescue Pumper and Heavy Rescue appliances.	\$15.4 million	\$15.4 million
<b>National Firearms Register</b>		
Implementation of the National Firearms Registry to enhance the sharing of timely and accurate firearms information to keep police and the community safe. Total cost of project is \$20.8 million jointly funded with Commonwealth on 50:50 basis, of which \$8.5 million is recurrent expenditure.	\$12.3 million	\$12.3 million
<b>Strategic Hosting Data Centre</b>		
This project will deliver digital, and information based policing systems and technology innovation and provide physical and cyber resilient NSW Police Force Information Technology systems.	\$10.3 million	\$10.3 million
<b>Byron Bay New Station</b>		
The replacement station is to be built on an alternative site. It will include two engine bays and provide staff with facilities addressing adequate privacy, safety and meet the clean fire station principles.	\$8.2 million	\$8.2 million
<b>Charlestown New Station</b>		
The new station will incorporate facilities that address adequate privacy, safety and clean fire station principles. This station is in a high growth, high demand zone and provides services to a large residential population, bushland urban interface as well as one of the region's major shopping precincts.	\$7.7 million	\$7.7 million

Table 2.4: Key Communities and Justice projects continuing in this Budget

Project	Estimated total cost	Expenditure over four years to 2027-28
<b>Social Housing Accelerator</b>		
Land and Housing Corporation (LAHC), utilizing funding from the Australian Government under the Social Housing Accelerator Agreement along with some existing LAHC funding will deliver 850 new social homes.	\$423.3 million	\$366.6 million
<b>Penrith Stadium Redevelopment</b>		
The redevelopment of Penrith Stadium will turn it into a world-class suburban sport, entertainment, and community venue. The Government has committed to the redevelopment, with early works to commence in 2024-25.	\$309.0 million	\$304.0 million
<b>Fire and Rescue NSW (FRNSW) Replacement of Fire Appliances Program</b>		
This project replaces aged essential firefighting vehicles and supplies additional vehicles to areas of high demand, based on community needs. This ensures the community is consistently supported by operational vehicles that are safe, reliable and incorporate the latest advances in technology.	\$278.3 million	\$69.6 million
<b>Social and Community Housing</b>		
Continuing construction, upgrades and maintenance of social and community housing for First Nations communities through the Aboriginal Housing Office.	\$210.4 million	\$139.2 million
<b>Regional Housing Program</b>		
\$70.0 million interest-free debt financing and \$82.5 million from NSW Land and Housing Corporation's own sources to accelerate the delivery of social, affordable and private homes in regional New South Wales.	\$152.5 million	\$144.2 million
<b>SES Fleet Replacement of vehicles, boats and trailers</b>		
Investment in replacing the SES fleet to help provide a timely response to communities during floods, tsunamis and rescues.	\$119.2 million	\$39.8 million
<b>Sustaining Critical Infrastructure Program Phase 2</b>		
This program will support critical infrastructure upgrades across the Department of Communities and Justice, providing investment in Audio Visual Link facilities and enhancements of courthouses, correctional facilities and youth justice facilities.	\$117.5 million	\$81.8 million
<b>RFS NSW Bushfire Inquiry Funding Package</b>		
Significant items in this package will provide safety upgrades and new vehicles for bushfire fighting response and additional trucks for crews involved with hazard reduction works across the State.	\$116.6 million	\$29.7 million
<b>SES Critical Communications Enhancement Program (CCEP) – Stay Safe Keep Operational</b>		
Stay Safe and Keep Operational program is to safely maintain existing agency front line communications while the enhanced Government Radio Network (GRN) is being delivered through the CCEP.	\$53.5 million	\$21.2 million
<b>FRNSW Fit for Purpose Fire Stations</b>		
This program will increase women's participation in the FRNSW workforce and enhance workplace safety, including upgrades and installing new female bathrooms at fire stations across the State.	\$50.0 million	\$17.1 million

Project	Estimated total cost	Expenditure over four years to 2027-28
<b>New Lake Macquarie Sport and Recreation Centre Project</b>		
Construction of the new Lake Macquarie Centre at the old Morisset Hospital site, to replace the old Myuna Bay Centre and to support the needs of the local community.	\$40.0 million	\$32.3 million
<b>New Fire Stations</b>		
New stations are being planned and built in key locations across the state including Broken Hill, Cessnock, Dungog, Lithgow and Wentworthville.	\$35.9 million	\$29.5 million
<b>SES Response to the 2022 Flood Inquiry</b>		
Investment in state-wide flood rescue coordination, operational systems, equipment and multi-agency integration to ensure effective multi-agency flood rescue response across New South Wales.	\$34.4 million	\$7.5 million
<b>Critical Police Radio Network Infrastructure in Southern Region</b>		
To refresh end-of-life technology of the police radio network infrastructure covering the Southern, Southwest and Far West Regions of New South Wales.	\$26.6 million	\$22.3 million
<b>Response to the independent review of 2021 Flood Events and Facilities Review</b>		
Establish two new Zone headquarters in Northern and Western NSW to appropriately prepare for and respond to the risk of future flood events across the State and provide an uplift to eighteen critical priority unit facilities across the State.	\$25.3 million	\$15.8 million
<b>Marine Vessel Replacement Program – Phase 2</b>		
A new police vessel fleet to ensure that the NSW Police Force continues to have capability and capacity to deliver crucial services.	\$18.9 million	\$11.7 million
<b>Expansion and upgrade of Audio Visual Link facilities for court and tribunal rooms, including for Domestic Violence Complainants and Witnesses</b>		
Audio Visual installations for court and tribunal rooms to support operations across New South Wales.	\$18.0 million	\$14.1 million
<b>Integrated Biometric Platform</b>		
To replace the current outdated system with a multi-modal platform that provides a comprehensive profile of an offender including DNA, fingerprints and imagery.	\$13.8 million	\$11.7 million
<b>Removal of Cell Ligation Points</b>		
Undertake refurbishment of cells to remove obvious hanging points.	\$6.0 million	\$6.0 million
<b>Fire Station Upgrades</b>		
Refurbishment of the fire stations at Engadine, Helensburgh, Thirroul, Sutherland, and Coledale.	\$5.0 million	\$4.9 million
<b>Sydney International Regatta Centre Replacement of Electronic Timing System</b>		
Replacement of the electronic timing system that enables the Regatta Centre to continue hosting competitive regattas including international events. Due for completion in 2024.	\$3.6 million	\$3.0 million

Pages 4-13 to 4-21 of Chapter 4 of this *Infrastructure Statement* list the major capital projects and minor works for the Communities and Justice agencies, including the ETC, estimated expenditure to 30 June 2024, and 2024-25 allocation.

## 2.3 Customer Service



The Customer Service agencies are committed to providing effective and easy-to-use services and regulatory functions that customers and communities trust, no matter who they are, where they are or what they need. This includes delivering world-class services in person, online and over the phone, as well as improving the digital availability, reliability and security of NSW Government platforms, information and services.

\$1.0 billion	Capital Expenditure to 2027-28
\$350.6 million	Capital Expenditure 2024-25

The NSW Government is focused on investing in whole-of-sector digital information and communication technology to improve services for the people of New South Wales. A key ongoing goal is to promote a progressive, whole-of-sector approach to service provision, enabling clusters to promote productivity and efficiency.

This Budget includes \$1.0 billion in capital spending for Customer Service initiatives and projects over the four years to 2027-28.

### Box 2.6: Promoting digital innovation and reducing cyber risk

This Budget continues to place digital investment at the forefront to ensure government can deliver critical services, manage cyber threats, and continue to drive the next wave of digital innovation of public services.

It dedicates \$97.9 million capital expenditure over four years from the Digital Restart Fund to invest in strategic digital priorities, including \$42.6 million capital expenditure for cyber security measures. The focus of this investment is towards delivering reusable digital infrastructure for the NSW public sector, mitigating critical risks, improving cyber security and transforming key legacy applications to provide more accessible, secure and responsive services to communities and citizens.

The Government also continues to invest in capabilities to safeguard against cyber-attacks that may lead to service disruptions and threats to personal data. In this evolving threat environment, safeguarding against cyber attacks that can disrupt services, compromise sensitive information or harm infrastructure remains a core focus. Continued investment in cyber security is necessary to ensure that organisations are sufficiently equipped with people, skills, tools and resources to address the threat landscape.

Table 2.5: Key new Customer Service projects commencing in 2024-25 included in this Budget

Project	Estimated total cost	Expenditure over four years to 2027-28
<b>Reducing Extreme Cyber Security Risk – Digital Restart Fund</b>		
Reducing extreme cyber security risk through enhancements to implement the Department's Cyber Security Strategy.	\$18.0 million	\$18.0 million

Table 2.6: Key Customer Service projects continuing in this Budget

Project	Estimated total cost	Expenditure over four years to 2027-28
<b>Critical Communications Enhancement Program</b>		
This program consolidates Government-owned radio networks to facilitate a co-ordinated Government response to critical incidents and emergencies.	\$1.3 billion	\$490.4 million
<b>Modern Licensing and Compliance Program</b>		
Modern Licensing and Compliance Program – Phase 2 Securing the Benefits of Digital Licensing, supporting digital delivery and regulatory transformation for both licence holders and regulators.	\$146.7 million	\$42.5 million
<b>Live NSW (Spatial Digital Twin)</b>		
Building a cross sector collaborative environment (shared digital platform) for visual location information (mapping) in a four-dimensional model to support decision making across utilities, land use, and planning.	\$29.0 million	\$3.0 million

Pages 4-22 to 4-24 of Chapter 4 of this *Infrastructure Statement* list the major capital projects and minor works for the Customer Service agencies, including the ETC, estimated expenditure to 30 June 2024, and 2024-25 allocation.

## 2.4 Education



This Budget demonstrates the NSW Government’s commitment to create an outstanding and equitable education system, where every student can learn, grow and belong.

\$9.5 billion

Capital Expenditure to 2027-28

\$3.0 billion

Capital Expenditure 2024-25

The NSW Government is delivering capital investments that help rebuild public education in New South Wales, and that help ensure teachers, school staff and students feel valued and respected.

The 2024-25 Budget includes \$8.9 billion in capital expenditure over the four years to 2027-28 that will support planning and delivery of new and upgraded schools, delivering facilities to help ensure every student has access to high quality, inclusive and sustainable learning environments at their local public school together with a record investment to deliver 100 public preschools, the largest expansion of public preschools in NSW history.

In line with findings from the NSW Government’s enrolment growth audit, the 2024-25 Budget is addressing population growth in priority growth areas and precincts. New schools and major upgrades will provide urgently needed school enrolment capacity in Western Sydney with planning continuing for new schools in developing suburbs.

This includes a new primary school and a new high school in Box Hill to address the population boom in the growing suburb. The NSW Government’s Enrolment Growth Audit found that actual enrolments from families living in Box Hill increased by more than 1,000 per cent from 119 in 2018 to 1,445 in 2023.

The NSW Government has continued its focus on regional communities, with an investment of \$1.4 billion to improve school infrastructure in regional New South Wales, including new school projects and rebuilding and upgrading regional schools.

See Box 2.8 for a list of new projects in this Budget and further information on the Government’s education program.

### Box 2.7: Regional schools

More than \$1.4 billion over four years is committed to deliver critical projects for regional New South Wales. This includes delivering an expansion of Googong Public School (Stage 2), accelerating the delivery of a new public school in Calderwood, and delivering a site for the new primary school and high school in fast growing Huntlee and surrounds.

Work is also underway to fully rebuild Willyama High School in Broken Hill and also to deliver the much needed school works in the flood impacted North Coast, demonstrating the NSW Government’s commitment to supporting students across the State.

**Box 2.8: Demonstrating a commitment to 130 new and upgraded schools**

For more information see <https://www.schoolinfrastructure.nsw.gov.au>

**New Schools and Upgrades**

- Austral Public School Upgrade – Stage 2
- Box Hill (new primary school and high school)
- Calderwood (new primary school)
- Googong Public School Upgrade – Stage 2
- Huntlee (new primary school and high school)
- Leppington Public School Upgrade – Stage 2
- Northern Beaches Secondary College Cromer Campus Upgrade
- Riverbank Public School and The Ponds High School Upgrade – expanded project
- Yennora Public School and Verona School Upgrade – Multi Purpose Hall
- New and Upgraded Schools

**Ongoing works – New and Upgraded Schools**

- 100 new preschools
- Albury Thurgoona (new primary school)
- Austral Public School Upgrade
- Bathurst Secondary School Community Group Renewal
- Birrong Boys and Girls High School Upgrade
- Bomaderry High School Upgrade
- Budawang School (relocation)
- Bungendore High School (new school)
- Cambridge Gardens Public School Upgrade
- Cammeray Public School Upgrade
- Carlingford West Public School Upgrade
- Castle Hill Public School Upgrade
- Cecil Hills High School Upgrade
- Centre of Excellence for Agricultural Education
- Chatswood (new primary school)
- Concord High School Upgrade
- Condell Park High School Upgrade
- Cronulla High School Upgrade
- Cumberland High School Upgrade
- Dalmeny Public School Upgrade
- Dapto High School Covered Outdoor Learning Area
- Darcy Road Public School Upgrade
- Dundas Public School Upgrade
- Eagle Vale High School (selective sports stream)
- Eastwood Public School Upgrade
- Edmondson Park (new high school)
- Engadine High School Upgrade
- Flinders – Planning (new high school)
- Former Shoalhaven Anglican School site (open for public education)
- Gables (new primary school)
- Gillieston Public School (redevelopment)
- Girraween Public School Upgrade
- Gledswood/Gregory Hills (new high school)
- Googong (new high school)
- Green Square Public School (new school)
- Greenway Park Public School Upgrade
- Gregory Hills Public School (new school)
- Hastings Secondary College Upgrade
- Hunter River High School Upgrade
- Hurlstone Agricultural High School Upgrade – Stage 2
- Irrawang High School Upgrade
- Jerrabomberra High School Upgrade – Stage 2
- Jindabyne Education Campus
- Jordan Springs (new high school)
- Katoomba High School New Multi-Purpose Hall
- Kingscliff High School Upgrade
- Kingscliff Public School Upgrade
- Kingswood Public School Upgrade
- Kogarah Public School Upgrade
- Leeton Primary School Community Group Renewal
- Lennox Head Public School (relocation)
- Leppington Public School Upgrade
- Leppington/Denham Court (new high school)
- Liverpool Boys and Girls High School (redevelopment)
- Macquarie Park Education Campus
- Manly Village Public School Upgrade
- Matthew Pearce Public School Upgrade
- Medowie (new high school)
- Melonba Education Campus (Melonba High School and Melonba Public School)
- Melrose Park (new high school)
- Melrose Park Public School (redevelopment)
- Middle Head Environment Education Centre
- Midtown Macquarie Park (new primary school)
- Milton Public School Upgrade
- Minnamurra Public School (new nature playground)
- Moruya High School Upgrade
- Narrabeen North Public School and Narrabeen Sports High School Upgrades
- Neutral Bay Public School Upgrade
- New schools for Westmead
- Newcastle High School (redevelopment)
- Nimimba Fields Public School (new school)
- Northbridge Public School Upgrade
- Northmead Creative and Performing Arts High School Upgrade
- Northmead Public School Upgrade
- Nowra (new primary school)
- Orange Grove Public School Upgrade
- Orana Heights Public School Upgrade
- Parramatta East Public School Upgrade
- Penrith Lakes Environmental Education Centre Upgrade
- Pottsville – Planning (new high school)
- Punchbowl Public School Upgrade
- Randwick High School Upgrade
- Rhodes East (new primary school)
- Riverbank Public School Upgrade

- Rouse Hill High School Upgrade
- Rydalmere Education Campus
- Schofields Public School Upgrade
- Schofields/Tallawong (new high school)
- Sir Joseph Banks High School Upgrade
- St Leonards Education Precinct
- Sutherland Public School New Multi – Purpose Hall
- Sydney Olympic Park (Carter St Precinct) (new primary school)
- Tallawong Public School (new school)
- Telopea Public School Upgrade
- The Forest High School (Relocation)
- The Ponds High School Upgrade
- Tweed Heads South Public School Upgrade
- Tweed River High School Skills Upgrade
- Tweed River High School Upgrade
- Ulladulla Public School Upgrade
- Ulladulla High School Upgrade
- Upgrades for high schools in Griffith
- Upgrades for schools in Murwillumbah
- Vincentia High School Upgrade
- Wee Waa High School (relocation)
- Wentworth Point High School (new school)
- Wentworth Point Public School Upgrade – Stage 2
- West Dapto – Planning (new primary school)
- Wilton Junction (new primary school)
- Wilton Public School Upgrade
- Yanco Agricultural High School Upgrade

### Programs

- Maintenance Program
- Minor Works Program

### Public preschools

- Albury Thurgoona new primary school
- Barrack Heights Public School
- Beelbangera Public School
- Berkeley West Public School
- Birrong Public School
- Blackett Public School
- Blacktown North Public School
- Blairmount Public School
- Blaxcell Street Public School
- Bomaderry Public School
- Booragul Public School
- Boorowa Central School
- Bourke Public School
- Bowraville Central School
- Bradbury Public School
- Cabramatta West Public School
- Carramar Public School
- Carter Street Precinct (Sydney Olympic Park) new primary school
- Cartwright Public School
- Cecil Hills Public School
- Cessnock Public School
- Chullora Public School
- Crawford Public School
- Cringila Public School
- Curran Public School
- Deniliquin South Public School
- Edensor Park Public School
- Ellalong Public School
- Emerton Public School
- Eschol Park Public School
- Fairfield West Public School
- Gables new primary school
- Gillieston Public School
- Governor Philip King Public School
- Granville East Public School
- Granville South Public School
- Greenway Park Public School
- Greenwell Point Public School
- Guildford Public School
- Guildford West Public School
- Gulyangarri Public School
- Hanwood Public School
- Harcourt Public School
- Hayes Park Public School
- Hebersham Public School
- Heckenberg Public School
- Hillvue Public School
- Jindabyne Public School
- Kearns Public School
- Kearsley Public School
- Kingsgrove Public School
- Kurri Kurri Public School
- Lake Heights Public School
- Lake Illawarra South Public School
- Lansvale East Public School
- Leeton Public School
- Lennox Head Public School
- Leppington Public School
- Leumeah Public School
- Lynwood Park Public School
- Maryland Public School
- Melonba Public School
- Melrose Park Public School
- Menindee Central School
- Miller Public School
- Moorland Public School
- Morgan Street Public School
- Moss Vale Public School
- Mount Pritchard Public School
- Nirimba Fields Public School
- Nowra new primary school
- Nulkaba Public School
- Parkes East Public School
- Parkview Public School
- Prairievale Public School
- Queanbeyan East Public School
- Queanbeyan South Public School
- Robert Townson Public School
- Ruse Public School
- Sackville Street Public School
- Sanctuary Point Public School
- Shalvey Public School
- Sherwood Grange Public School
- Shortland Public School
- Tacking Point Public School
- Taree Public School
- Tenambit Public School
- Teralba Public School
- Thomas Acres Public School
- Toomelah Public School
- Tuggerawong Public School
- Umina Beach Public School
- Villawood North Public School
- Warialda Public School
- Weston Public School
- William Stimson Public School
- Wilton Junction new primary school
- Wollongbar Public School
- Woodland Road Public School
- Yagoona Public School



**Box 2.9: 100 public preschools**

The NSW Government’s record investment will deliver 100 public preschools and is the largest expansion of public preschools in NSW history.

Figure 2.1: 100 new public preschools in New South Wales



Figure 2.2: New public preschools within the Blacktown local government area

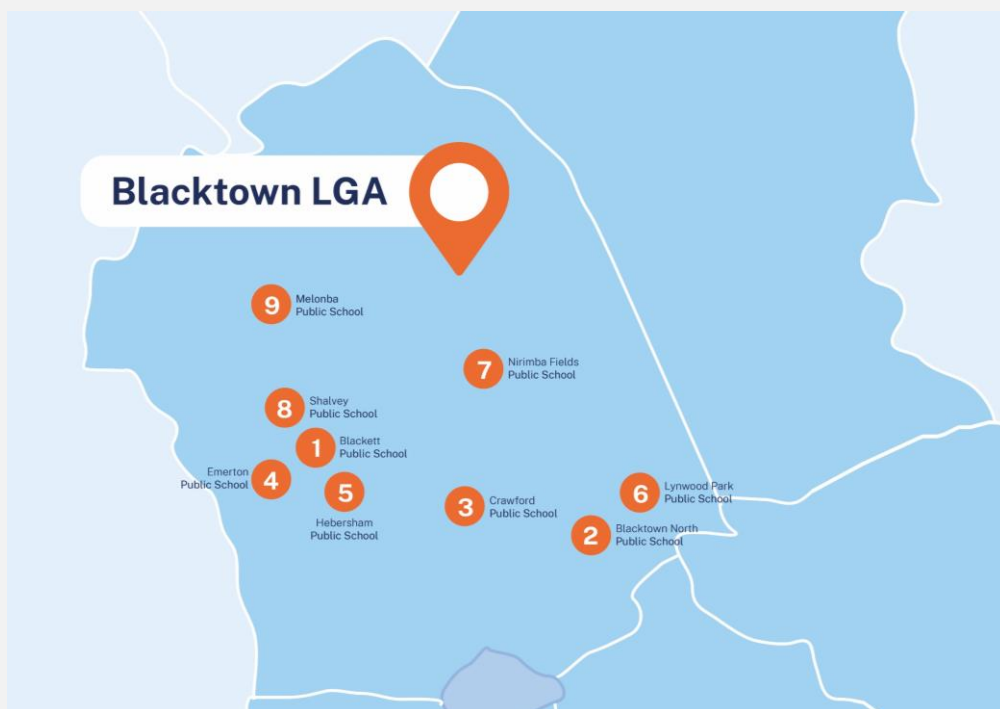


Figure 2.3: New public preschools within the Campbelltown local government area

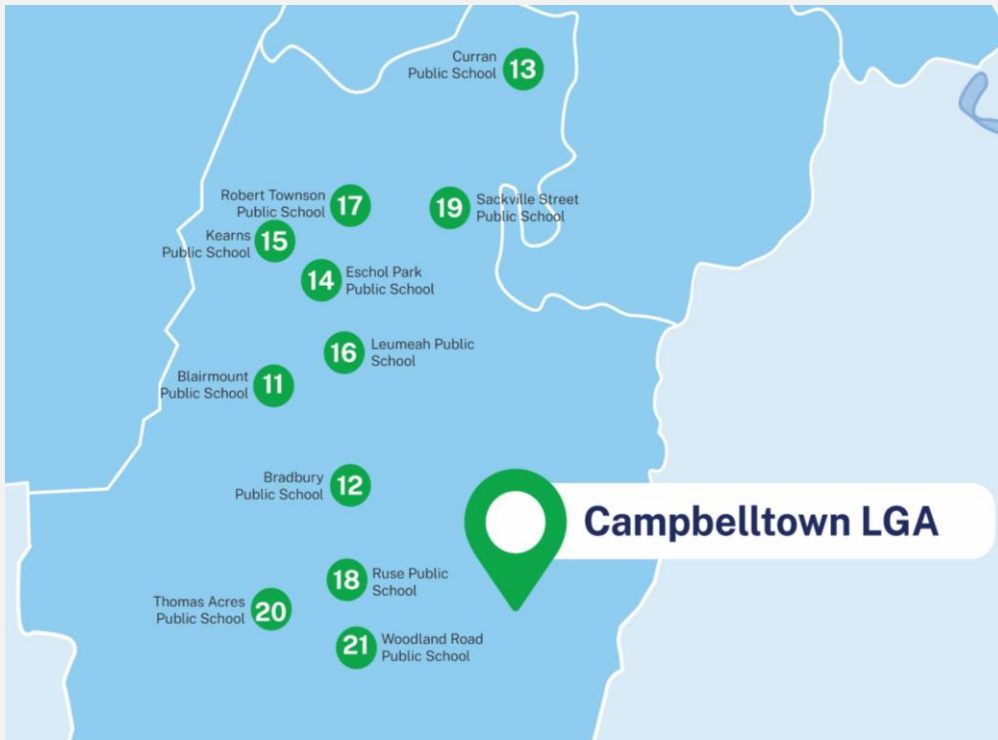


Figure 2.4: New public preschools within the Cumberland, Fairfield and Liverpool local government areas



Table 2.7: Key new Education projects commencing in 2024-25 included in this Budget

Project	Estimated total cost	Expenditure over four years to 2027-28
<b>Box Hill new primary school and new high school</b>		
A new primary school and secondary school is underway to address enrolment demand from new dwellings in the North West Growth Area. These schools are in addition to the new primary school in Gables to respond to the increase in population in the Box Hill area.	n.a.	n.a.
<b>Huntlee new primary school and new high school</b>		
This project commits to building a new primary and high school in Huntlee to serve the communities in Huntlee, Branxton and North Rothbury.	n.a.	n.a.
<b>Calderwood new primary school</b>		
Accelerates the delivery of a new primary school to ensure students in the fast growing area have a local school to attend.	n.a.	n.a.
<b>Jindabyne Education Campus supporting infrastructure</b>		
An additional allocation to deliver the essential road and supporting infrastructure works to ensure the local community has easy and safe access to their new schools.	n.a.	n.a.

Table 2.8: Key Education projects continuing in this Budget

Project	Estimated total cost	Expenditure over four years to 2027-28
<b>TAFE Asset Renewal Program (ARP)</b>		
The ARP will ensure the timely replacement or maintenance of assets across TAFE NSW campuses. The program will improve facilities, upgrade teaching equipment and support overall sustainability of TAFE NSW's asset portfolio.	\$319.0 million	\$90.0 million
<b>TAFE NSW Digital Access Foundation</b>		
The Digital Access Foundation Project will provide reliable internet, Wi-Fi connectivity and end user digital & collaboration devices to meet essential digital access requirements for student learning and business operations across TAFE campuses.	\$74.0 million	\$37.0 million
<b>NSW Education Standards Authority's (NESA) cyber and technology program</b>		
Will strengthen NESA's defensive and preventative capabilities, substantially reduce NESA's overall technology and cyber security risk profile and build better resilience, speed and responsiveness while improving recovery time in case of a cyber incident.	\$59.1 million	\$53.4 million
<b>100 new government preschools</b>		
Co-located with NSW public schools, including delivering a preschool with every new primary school project.	n.a.	n.a.
<b>Googong New High School</b>		
This project will provide new essential education infrastructure to regional NSW and accommodate the anticipated increase in enrolments throughout the Googong area, allowing families to access world-class educational facilities close to home.	n.a.	n.a.

Project	Estimated total cost	Expenditure over four years to 2027-28
<b>Schofields and Tallawong New High School</b>		
This project will deliver a new high school for the growing communities in Schofields and Tallawong, identified by the NSW enrolment growth audit as some of the fastest growing communities in the state. The new high school in Sydney's north-west will help to ensure working families have access to world class public education facilities.	n.a.	n.a.
<b>Austral Public School Upgrade and Leppington Public School Upgrade</b>		
The upgrades at Austral Public School and Leppington Public School will include new classrooms and improved core facilities to support the increasing student population in Sydney's growing south-west. The projects will deliver additional fit-for-purpose permanent classrooms, new support learning classrooms and upgrades and refurbishments to facilities.	n.a.	n.a.
<b>Eagle Vale High School Upgrade</b>		
This project will upgrade the Eagle Vale High School to deliver a selective sports stream, giving students the opportunity to achieve their academic and sporting potential. The project will include refurbishment of the multi-purpose hall, a new outdoor synthetic pitch, sports oval improvements and changing room upgrades.	n.a.	n.a.
<b>Medowie (new high school)</b>		
A new high school will be delivered for the growing community in Medowie. This is in addition to upgrades for Irrawang High School and Hunter River High School.	n.a.	n.a.
This school will not only provide essential education infrastructure but also accommodate the anticipated increase in enrolments in the area and allow families to conveniently access educational facilities close to home.		
<b>Leppington (new high school)</b>		
This project will deliver a new high school in the growth area of South-West Sydney to provide a local high school for students of Leppington and Denham Court. The high school is proposed to be built on Rickard Road bordered by community greenspace and the Byron Road sports fields.	n.a.	n.a.
<b>Gledswood Hills and Gregory Hills (new high school)</b>		
Work is underway for a new high school for Gledswood Hills and Gregory Hills. To meet the needs of local students in the short term, the new high school will open in temporary facilities on the site of the new Gregory Hills Public School, catering for Year 7 students from Day 1 Term 1 2025, subject to planning approvals.	n.a.	n.a.

Pages 4-25 to 4-31 of Chapter 4 of this *Infrastructure Statement* list the major capital projects and minor works for the Education agencies, including the ETC, estimated expenditure to 30 June 2024, and 2024-25 allocation.

## 2.5 Health



The NSW Government is committed to ensuring the community can access high quality hospitals and health facilities across the state.

The Budget prioritises investment in health infrastructure to deliver better healthcare in NSW. Significant capital investment in this Budget will ensure patients can receive high-quality care in their local community. Additional investments will ensure growing communities have the right level of access to essential health services.

\$13.4  
billion

Capital  
Expenditure  
to 2027-28

\$3.4  
billion

Capital  
Expenditure  
2024-25

This Budget includes \$13.4 billion<sup>1</sup> of capital investment over the four years to 2027-28 in health infrastructure, which includes both hospitals and health facilities as well as health programs.

### Box 2.10: Health Capital Program

Health has a significant capital program of \$3.4 billion in 2024-25. This will enable the continued delivery of key projects including:

- Nepean Hospital and Integrated Ambulatory Services Stage 1 and 2, ETC of \$1.0 billion
- John Hunter Health and Innovation Precinct, ETC of \$835.0 million
- Liverpool Health and Academic Precinct, ETC of \$780.0 million
- Sydney Childrens Hospital, Randwick – Stage 1 Childrens Comprehensive Cancer Centre, ETC of \$658.0 million
- The Children’s Hospital at Westmead Stage 2 Redevelopment (Including Car Park), ETC of \$619.0 million
- The Building Better Hospitals Package commits \$265.0 million for a critical upgrade of Port Macquarie Hospital and an additional \$395.3 million to deliver ongoing hospital redevelopments at Eurobodalla, Ryde, Temora, Mental Health Complex at Westmead, Liverpool, Moree, Nepean, Cessnock and Shellharbour.

Refer to table 2.10 for further project details.

<sup>1</sup> This includes \$678 million for lease acquisitions and \$522 million of capital expensing from the Ministry of Health’s expense budget over the next four years. In 2024-25, health infrastructure spending includes \$147 million of capital expensing and \$99 million for lease acquisitions.

### **Box 2.11: Port Macquarie Base Hospital Mechanical and Clinical Infrastructure upgrade**

**Project:** This Budget includes funding for a significant upgrade of Port Macquarie Hospital to provide a greater range and enhancement of clinical services, including emergency and maternity services for the communities of the Mid North Coast.

This project will support upgrades and rectification of major mechanical infrastructure and address key functional infrastructure constraints which have been identified through clinical service planning as significantly limiting the hospital's capacity to manage increasing demand.

**Service delivery objective:** This project will relocate the maternity and special care unit to an existing shell space enabling the maternity unit to meet current design standards, support contemporary service models, and meet staff and community expectations.

The project will also fund the refurbishment and expansion of the emergency department to address capacity issues and meet projected demand to 2036, in line with clinical service planning. In addition, the project will undertake essential mechanical plant replacement.

**Implementation:** Planning will commence in 2024.

**Funding allocation:** The estimated total cost of the project is \$265.0 million.

### **Box 2.12: Key Health Worker Accommodation Program**

**Project:** This Budget includes funding to implement a Key Health Worker Accommodation Program to provide a response to the current lack of housing supply in rural and regional areas.

**Service delivery objective:** Key health workers play a crucial role in regional, rural, and remote Local Health Districts communities, contributing to positive social and economic outcomes. However, many regional areas are facing shortages of key health workers, which has significant impacts on the lives of citizens in these communities.

There is an urgent need for the delivery of fit-for-purpose, accommodation for key health workers. The Key Health Worker Accommodation funding will deliver a range of benefits through the provision of fit for purpose accommodation to provide comfort, security, and amenity for key health workers and support regions to attract and retain staff in rural communities.

**Implementation:** Planning will commence in 2024.

**Funding allocation:** The estimated total cost of the project is \$200.1 million.

Table 2.9: Key New Health Projects commencing in 2024-25 included in this Budget

Project	Estimated total cost	Expenditure over four years to 2027-28
<p><b>Port Macquarie Base Hospital Mechanical and Clinical Infrastructure upgrade</b></p> <p>For a critical upgrade of Port Macquarie Hospital to provide a greater range and enhancement of clinical services, including emergency and maternity services for the communities of the Mid North Coast.</p>	\$265.0 million	\$16.1 million
<p><b>Key Health Worker Accommodation Program</b></p> <p>To implement a Key Health Worker Accommodation Program to provide a response to the current lack of housing supply in rural and regional areas.</p>	\$200.1 million	\$200.1 million
<p><b>Emergency Department Relief Package</b></p> <p>To address the complex and interrelated factors contributing to growing demand for health services, increasing pressure on emergency departments and demand for inpatient hospital beds.</p>	\$59.6 million	\$59.6 million

Table 2.10: Key Health projects continuing in this Budget

Project	Estimated total cost	Expenditure over four years to 2027-28
<p><b>Bankstown Hospital (New)</b></p> <p>Rebuilding of the hospital on a new site to transform the delivery of healthcare in the area to meet the growing health needs of South Western Sydney communities. The project will include enhanced emergency, intensive care, surgical, medical, women and children's health, subacute, mental health, ambulatory and community health services.</p>	\$1.3 billion	\$705.5 million
<p><b>Nepean Hospital and Integrated Ambulatory Services Stage 1 and 2</b></p> <p>This ongoing redevelopment at the Nepean Hospital will improve access to innovative, effective and welcoming health services for people in Western Sydney and the Blue Mountains. Stage 1 of the project is complete, following the formal opening of Nepean Hospital's new 14-storey tower in 2022. Construction of the second clinical services building as part of the Stage 2 Nepean Hospital redevelopment is continuing. This will include an adult Intensive Care Unit, medical imaging services and nuclear medicine, an in-centre renal dialysis unit, more in-patient beds including paediatrics, clinical support services including pharmacy, staff education and training facilities, community health services, and a new front of house and reception area.</p>	\$1.0 billion	\$276.7 million
<p><b>Royal Prince Alfred Hospital Redevelopment</b></p> <p>This significant redevelopment is an innovative approach to contemporary healthcare, featuring an expansion of virtual facilities, new hospital buildings and refurbishment of existing spaces. These investments will allow for more adult inpatient beds, an expanded emergency department, intensive care unit, medical imaging services, operating theatres and maternity, birthing and neonatal services. The project will develop a whole of campus solution, which brings together new models of care, enabling technology and physical infrastructure to support service expansion and changes in service delivery.</p>	\$940.0 million	\$687.2 million

Project	Estimated total cost	Expenditure over four years to 2027-28
<b>John Hunter Health and Innovation Precinct</b>		
The redevelopment of the John Hunter and John Hunter Children's Hospitals will deliver a significant expansion of health services, providing additional capacity and purpose-built infrastructure, to enable implementation of contemporary models of care to the communities of the Hunter and New England.	\$835.0 million	\$498.2 million
<b>New Shellharbour Hospital (Including Car Park) and Integrated Services</b>		
The New Shellharbour Hospital and Integrated Services project will enhance the current and future health services available for the Illawarra community by focusing on modern healthcare delivery, service sustainability, networking and consolidation to improve health outcomes for the region. These include enhanced services in rehabilitation and aged care, mental health, outpatients, and palliative care.	\$781.9 million	\$564.7 million
<b>Liverpool Health and Academic Precinct (Excluding Car Park)</b>		
The Liverpool Health and Academic Precinct will provide a significant boost in health services to South Western Sydney's growing population through an integrated cancer centre, expansion of the hospital's emergency department, neonatal intensive care, maternity and children's services, and ambulatory and outpatient care.	\$780.0 million	\$342.8 million
<b>Rouse Hill Hospital</b>		
The expansion of Rouse Hill Hospital will result in a new hospital that includes an emergency department and women's health services, day surgery unit, adult and paediatric short stay unit, ambulatory and outpatients care, comprehensive medical imaging services, and prehabilitation and rehabilitation services.	\$700.0 million	\$635.9 million
<b>State-wide Mental Health Infrastructure Program</b>		
This program enables the delivery of infrastructure needed to support and achieve key state-wide mental health reforms and priorities, including Living Well: A Strategic Plan for Mental Health in NSW 2014-2024. The program includes addressing service requirements in state-wide services such as child and adolescent and older persons services, forensic services and facilities to support recovery and greater opportunity for people to transition or receive care in the community. The program will also improve the therapeutic environment of identified NSW Health facilities providing acute mental health care.	\$669.8 million	\$334.2 million
<b>Single Digital Patient Record<sup>2</sup></b>		
Single Digital Patient Record (SDPR) is a next-generation system that will enhance experiences of care by giving clinicians access to a patient's medical information in real-time, from a single source. It will provide simplified clinical workflows in an intuitive, user-friendly system with streamlined technical support. The wider NSW Health system will also benefit from increased analytics, tools and reporting to support ongoing patient safety enhancement and research.	n.a.	\$328.2 million

<sup>2</sup> Includes additional second tranche funding



Project	Estimated total cost	Expenditure over four years to 2027-28
<p><b>Sydney Children's Hospital, Randwick – Stage 1 Children's Comprehensive Cancer Centre</b></p> <p>This investment delivers Stage 1 of the redevelopment and establishes Australia's first Children's Comprehensive Cancer Centre. It brings together world leading clinical care, research and teaching together to deliver improved models of care for sick and injured children across New South Wales.</p>	\$658.0 million	\$303.4 million
<p><b>The Children's Hospital at Westmead Stage 2 Redevelopment (Including Car Park)</b></p> <p>This investment ensures that the Children's Hospital at Westmead continues to be a world leader in providing paediatric services for children locally and across the State. It will see the construction of a new paediatric services building and multi-storey car park to serve the existing and expanded Children's Hospital.</p>	\$619.0 million	\$309.9 million
<p><b>Fairfield Hospital Redevelopment</b></p> <p>Expansion to Fairfield Hospital to deliver more inpatient beds, increase capacity of critical care services, and expand other hospital and ambulatory care services.</p>	\$550.0 million	\$503.0 million
<p><b>Integrated Mental Health Complex at Westmead</b></p> <p>The new Integrated Mental Health Complex will enable mental health services located at Cumberland Hospital West Campus to relocate to a new, purpose-built facility in the Westmead Health Precinct, connected to Westmead Hospital.</p>	\$540.0 million	\$409.8 million
<p><b>Albury Wodonga Regional Hospital</b></p> <p>A major redevelopment of Albury Hospital to improve patient safety, reduce duplication of services and travel between the Albury and Wodonga hospital sites, and increase the capability and responsiveness of the health service to meet future health needs.</p>	\$538.0 million <sup>3</sup>	\$414.4 million
<p><b>Ryde Hospital Redevelopment</b></p> <p>Redevelopment of the Ryde hospital will provide contemporary health services and facilities with an increased capacity, improve the patient experience and provide new models of care. It will also make best use of the current services available at Ryde, including the Graythwaite Rehabilitation Centre and historic Denistone House.</p>	\$526.8 million	\$470.9 million
<p><b>Shoalhaven Hospital Redevelopment</b></p> <p>The redevelopment will provide upgraded and contemporary health facilities. This includes significant expansion of the ambulatory care precinct, surgical beds and operating suites, medical wards including aged care, increased emergency capacity, enhanced medical imaging, mental health, pathology and support facilities.</p>	\$438.0 million	\$284.3 million
<p><b>St George Hospital – Ambulatory Care, Day Surgery, Sub-Acute Inpatient Building (Including Car Park)</b></p> <p>Bringing together a range of ambulatory, outpatient and community health services will deliver better health outcomes, greater clinical integration and care coordination as well as additional car parking.</p>	\$411.0 million	\$224.2 million

<sup>3</sup> This excludes an additional \$20 million from the Australian Government which is pending

Project	Estimated total cost	Expenditure over four years to 2027-28
<p><b>Canterbury Hospital Redevelopment</b></p> <p>An expansion of Canterbury Hospital and upgrades to existing infrastructure. The expansion of services will ensure that the facility is able to respond to the health needs of the growing, multicultural local community.</p>	\$350.0 million	\$327.9 million
<p><b>Eurobodalla Regional Hospital Redevelopment</b></p> <p>The new Eurobodalla Regional Hospital will deliver a sustainable, modern and purpose-built health facility to support the needs of the Eurobodalla Shire. The new hospital, located in Moruya will deliver patient-centred health services closer to home by using the latest healthcare solutions and models of care.</p>	\$330.0 million	\$244.2 million
<p><b>Grafton Hospital Redevelopment</b></p> <p>Redevelopment of the Grafton Base Hospital will support timely access to healthcare and improve patient outcomes and experience. The project includes expansion of the emergency department, additional beds and clinical support services.</p>	\$263.8 million	\$222.2 million
<p><b>Griffith Hospital Redevelopment</b></p> <p>This redevelopment will allow delivery of all key clinical services at a single location in a new, purpose-designed health facility that also supports contemporary models of care. It will include construction of a new clinical services building featuring an emergency department, operating theatres, and medical imaging and new services including aged care and rehabilitation inpatient beds.</p>	\$250.0 million	\$76.4 million
<p><b>Bathurst Hospital Redevelopment</b></p> <p>Redevelopment of the Bathurst Hospital will ensure the local community and wider Central West region have access to high quality care now and well into the future. The redevelopment addresses constraints of the current infrastructure and supports the implementation of contemporary models of care.</p>	\$200.0 million	\$189.3 million
<p><b>Sydney Biomedical Accelerator (SBA) as part of Tech Precinct</b></p> <p>This is a co-funded partnership project between the Sydney Local Health District and the University of Sydney, comprising a state-of-the-art biomedical research complex spanning the Royal Prince Alfred Hospital and the University campuses. The SBA presents a landmark vision and delivery plan to transform the state's biomedical research capabilities and accelerate innovation to tackle some of the most difficult and complex health challenges. The total project is valued at \$660.0 million.</p>	\$150.0 million	\$142.0 million
<p><b>Cessnock Hospital Redevelopment</b></p> <p>The project will deliver a contemporary facility that supports the latest models of care and improves functionality in a welcoming environment, to meet the healthcare needs of the community now and into the future.</p>	\$138.0 million	\$134.0 million
<p><b>Blacktown and Mount Druitt Hospitals – Additional Beds</b></p> <p>Expansion of Blacktown and Mount Druitt Hospitals to increase bed capacity.</p>	\$120.0 million	\$119.9 million

Project	Estimated total cost	Expenditure over four years to 2027-28
<b>Moree Hospital Redevelopment</b>		
The redevelopment will deliver a new acute services building that will house a new emergency department and operating theatre, medical imaging department, maternity and birthing suite, inpatient unit, and pathology department. The redevelopment also includes a light refurbishment of existing infrastructure for community health and outpatient services.	\$105.0 million	\$91.2 million
<b>Temora Hospital Redevelopment</b>		
The Redevelopment will provide the community with access to a new and modern hospital which integrates all services under one roof from the acute and non-hospital settings such as inpatient care, maternity services, surgical services, community health and outpatient services.	\$95.0 million	\$90.9 million

Pages 4-32 to 4-37 of Chapter 4 of this *Infrastructure Statement* list the major capital projects and minor works for the Health agencies, including the ETC, estimated expenditure to 30 June 2024, and 2024-25 allocation.

## 2.6 Jobs and Tourism



The Jobs and Tourism portfolio comprises the State's key cultural, hospitality, entertainment, and tourism agencies. Together, these agencies drive initiatives to promote economic growth in New South Wales by creating jobs and leveraging investment in the arts, entertainment and tourism sectors.

\$908.6  
million

Capital  
Expenditure  
to 2027-28

\$522.3  
million

Capital  
Expenditure  
2024-25

This Budget includes capital investment of \$908.6 million in Jobs and Tourism over the four years to 2027-28. These initiatives will continue to build the State's visitor economy and attract investment in key industries, driving ongoing prosperity in New South Wales.

Table 2.11: Key new Jobs and Tourism projects commencing in 2024-25 included in this Budget

Project	Estimated total cost	Expenditure over four years to 2027-28
<b>State Library NSW Critical Backlog Maintenance</b>		
Critical works to deliver improvement to safety, compliance and security issues required across the State Library's asset portfolio.	\$2.3 million	\$2.3 million
<b>Sydney Observatory Essential Heritage Works</b>		
Critical works to support the conservation and preservation of the Sydney Observatory.	\$1.2 million	\$1.2 million
<b>Australian Museum Spirit House Critical Works</b>		
Critical works to address the urgent heating, ventilation and air conditioning required within the Spirit House collections store at the William Street site.	\$1.0 million	\$1.0 million

Table 2.12: Key Jobs and Tourism projects continuing in this Budget

Project	Estimated total cost	Expenditure over four years to 2027-28
<b>New Powerhouse Museum in Parramatta and expansion of the Museum of Discovery Centre in Castle Hill</b>		
Modern exhibition spaces to enable the Powerhouse to hold exhibitions and showcase their collections. Works are due for completion in 2025.	\$840.0 million (NSW Government contribution)	\$300.2 million
<b>Walsh Bay Arts Precinct</b>		
Funding to continue the revitalisation of the Precinct to deliver a new home for some of Australia's most celebrated arts organisations. With contemporary facilities that complement the unique heritage value of the site, the project is supporting a sustainable and activated arts and cultural precinct to showcase NSW creativity and culture.	\$372.9 million	\$7.1 million
<b>Ultimo Powerhouse Museum</b>		
Funding to continue the heritage revitalisation of the Powerhouse Ultimo. This will ensure fit for purpose spaces that will deliver a dynamic applied arts and applied sciences program, presenting exhibitions that showcase the Powerhouse Collection and attract international exhibitions and programs that support the visitor and creative industries.	\$300.1 million	\$269.6 million

Project	Estimated total cost	Expenditure over four years to 2027-28
<b>Arts Maintenance and Upgrades Program</b>		
Funding to deliver improvements to accessibility, sustainability and functionality of arts and cultural infrastructure across New South Wales.	\$103.8 million	\$1.3 million
<b>Ribonucleic (RNA) Pilot Manufacturing Facility</b>		
Funding for a first-of-its-kind pilot facility in New South Wales to develop messenger RNA (mRNA) and RNA treatments for human and animal diseases. The facility will be established in partnership with all universities in New South Wales and the Australian Capital Territory and include laboratories and pre-clinical trial spaces that facilitate early-stage RNA-based drug development.	\$76.8 million	\$74.2 million
<b>National Art School Precinct Renewal</b>		
Funding for the revitalisation of the Old Darlinghurst Gaol, home to the National Art School. The investment will reinvigorate the heritage site and enhance its reputation as a leading arts and education precinct.	\$21.7 million	\$18.6 million
<b>Qtopia</b>		
Funding to provide a permanent home for the LGBTQI+ Museum Qtopia at the former Darlinghurst police station.	\$11.2 million	\$10.5 million
<b>Global NSW Strategy</b>		
Funding to support the Strategy to ensure the presence of New South Wales on the global stage to strengthen international trade and attract world-class industry capability to the State. Funding will go towards supporting critical offshore network and international offices.	\$7.2 million	\$1.9 million
<b>Australian Museum Pasifika Gallery</b>		
In 2023 the Australian Museum opened the new permanent Pasifika Gallery, Wansolmoana, providing a long-awaited opportunity for Pasifika diaspora in New South Wales and across the Pacific region to share their stories. There are ongoing works to maintain the physical and technical components of the exhibition as well as the interchanging of objects as required for conservation or cultural reasons.	\$3.1 million	\$0.3 million

Pages 4-38 to 4-40 of Chapter 4 of this *Infrastructure Statement* list the major capital projects and minor works for the Jobs and Tourism agencies, including the ETC, estimated expenditure to 30 June 2024, and 2024-25 allocation.

## 2.7 Planning



The Department of Planning, Housing and Infrastructure and its affiliated agencies shape thriving communities, public spaces, places and economies. By creating vibrant, productive spaces and precincts; managing lands, assets and property effectively; and delivering affordable and diverse housing, the Department is building a sustainable future for the people of New South Wales.

\$3.0 billion

Capital Expenditure to 2027-28

\$1.2 billion

Capital Expenditure 2024-25

This Budget includes \$3.0 billion in capital expenditure for Planning, Housing and Infrastructure initiatives and projects over the four years to 2027-28.

### Box 2.13: Building and maintaining community assets

The Department of Planning, Housing and Infrastructure and its affiliated agencies are responsible for managing a range of assets across the State for the benefit of communities, including public parks, recreational facilities and other land and property assets. The Government is investing an additional \$25.4 million capital expenditure over four years to 2027-28 to build, upgrade and maintain key infrastructure.

Key capital initiatives include:

- \$9.4 million for the construction of new sports and recreational facilities at Centennial Park and Moore Park, using funds raised by the Trust, as part of a \$12.7 million capital investment over ten years
- \$8.5 million for priority infrastructure and asset maintenance in Sydney Olympic Park to support sporting and entertainment events at international standards
- \$3.4 million to address priority infrastructure maintenance at the Botanic Gardens of Sydney, benefitting its 11 million annual visitors
- \$2.6 million for preliminary design and planning works to transform part of Moore Park Golf Course into a new public park in one of the most densely populated areas of Sydney
- \$1.6 million for priority infrastructure and asset maintenance at Parramatta Park.

Table 2.13: Key new Planning projects commencing in 2024-25 included in this Budget

Project	Estimated total cost	Expenditure over four years to 2027-28
<b>NSW Planning Digital Environment</b>		
To deliver the NSW Planning Portal Customer-First Program and embed a new operating model to enable system improvements and delivery of innovation and efficiencies.	\$20.4 million	\$20.4 million
<b>Residential Housing in North-West Sydney</b>		
To acquire land in the north-west growth area of Sydney to support the delivery of up to 475 new homes.	\$17.2 million	\$17.2 million
<b>Recreational Improvements at Centennial Parklands</b>		
To construct new sports and recreational facilities, using funds raised by the Trust.	\$12.7 million	\$9.4 million
<b>Sydney Olympic Park Infrastructure and Asset Maintenance</b>		
Priority infrastructure and asset maintenance in Sydney Olympic Park to support sporting and entertainment events at international standards.	\$8.5 million	\$8.5 million
<b>Bays West Stage 1 and Broader Precinct</b>		
Preliminary design and planning works to support the future redevelopment of Bays West around the Bays Metro station and White Bay Power Station.	\$5.0 million	\$5.0 million
<b>Royal Botanic Gardens and Domain Trust – Asset Renewal Program</b>		
To address priority infrastructure maintenance at the Botanic Gardens of Sydney.	\$3.4 million	\$3.4 million
<b>Moore Park Golf – Transformation to a Recreational Park</b>		
To complete planning, design and engagement options for the transformation of 20 hectares of Moore Park Golf Course into a new public park for Sydney.	\$2.6 million	\$2.6 million
<b>Parramatta Park Trust – Asset Renewal Program</b>		
For priority infrastructure and asset maintenance at Parramatta Park.	\$1.6 million	\$1.6 million

Table 2.14: Key Planning projects continuing in this Budget

Project	Estimated total cost	Expenditure over four years to 2027-28
<b>Bradfield City Centre Stage 1 Enabling Works</b>		
Early works and site preparation for the Bradfield City Centre, which will be situated on the doorstep of the new Western Sydney International (Nancy-Bird Walton) Airport.	\$870.6 million	\$751.8 million
<b>Advanced Manufacturing Research Facility (AMRF)</b>		
The AMRF will support industry, government and research institutions to collaborate, develop, scale up and commercialise advanced manufacturing technologies by providing specialist equipment and workspaces, and other services.	\$261.9 million	\$252.8 million
<b>Strategic Open Spaces Program Across Greater Sydney</b>		
The Strategic Open Spaces program is focused on creating, promoting, and encouraging enjoyable functional spaces to support healthy and active communities.	\$140.0 million	\$45.7 million

Project	Estimated total cost	Expenditure over four years to 2027-28
<b>Office Hubs in Dubbo and Coffs Harbour</b>		
To consolidate existing tenancies and provide modern, efficient office spaces to help attract and retain regional government workers.	\$119.9 million	\$109.4 million
<b>Cumberland Plain Conservation Plan – Land Acquisitions</b>		
To support the delivery of future homes in Western Sydney through conservation activities under the Cumberland Plain Conservation Plan, including capital expenditure as part of a total additional capital and recurrent investment of \$137.9 million this Budget.	\$109.3 million	\$86.2 million
<b>Research Facility – Building 3</b>		
To support scientific and industrial research operations at Bradfield City Centre.	\$49.0 million	\$49.0 million
<b>Parramatta North Program Early Works</b>		
Supporting the delivery of infrastructure and urban renewal.	\$34.8 million	\$11.6 million
<b>Property and Development NSW Asset Maintenance Program (Tranche 2)</b>		
Key maintenance across the State’s property portfolio.	\$22.8 million	\$17.1 million
<b>Valnet Framework Program</b>		
A new interactive customer-centric platform for land valuation and data management, replacing legacy systems and manual processing in the Office of the Valuer-General.	\$16.7 million	\$10.8 million

Pages 4-41 to 4-47 of Chapter 4 and 5-10 to 5-11 of Chapter 5 of this *Infrastructure Statement* list the major capital projects and minor works for the Planning, Housing and Infrastructure agencies, including the ETC, estimated expenditure to 30 June 2024, and 2024-25 allocation.



## 2.8 Regional NSW



Regional NSW helps to strengthen regional communities and economies. Projects seek to grow primary industries through sustainable land use practices, create regional employment opportunities and manage the responsible use of natural resources, including advancing sustainable mining and resource development.

\$226.0  
million

Capital  
Expenditure  
to 2027-28

\$134.7  
million

Capital  
Expenditure  
2024-25

Regional NSW is also responsible for overseeing the delivery of significant projects funded by the Snowy Hydro Legacy Fund, which supports transformative infrastructure projects across regional New South Wales.

This Budget includes \$609.1 million for projects across Regional NSW portfolio over the four years to 2027-28, including \$383.1 million for those in development that are classified as inventory.

### Box 2.14: Supporting the regions through the Snowy Hydro Legacy Fund

The Snowy Hydro Legacy Fund is designed to deliver key infrastructure that will benefit regional New South Wales. The Government is committed to investments in regional New South Wales that support regional job creation and economic development.

To date, a total of \$2.1 billion has been committed from the Snowy Hydro Legacy Fund for a range of transformative regional projects, including:

- \$332.2 million to transform Parkes into a national freight and logistics hub (\$235.4 million from the Snowy Hydro Legacy Fund)
- \$224.8 million to support Moree becoming a northern gateway diversifying its strong agricultural economy and offering opportunities for new technologies such as protected cropping and energy solutions in the middle of Australia's most productive grain region
- \$212.2 million for Wagga Wagga to be a hub of high value agricultural and food production supporting existing and new companies to do business Australia-wide and throughout the world
- \$196.3 million in the Snowy Mountains region for essential infrastructure to support housing and grow the year-round tourism industry
- \$45.0 million to support farmers and agribusinesses in the adoption of digital technology (ag-tech) and on-farm connectivity solutions to improve resource management, boost productivity and enhance water security.

Table 2.15: Key new Regional NSW projects commencing in 2024-25 included in this Budget

Project	Estimated total cost	Expenditure over four years to 2027-28
<b>Snowy 2.0 Gaden Trout Hatchery</b>		
The project will expand the Gaden Trout Hatchery capacity to produce up to 20 tonnes of additional fish to stock the Tantangara Reservoir and Lake Eucumbene with salmonid fish. This will address potential risks to the trout fishery from the translocation of Redfin perch due to the Snowy 2.0 project. The project will also build resilience into the existing populations of both Macquarie perch and Stocky galaxias and help the long-term survival of both species within the upper Murrumbidgee Catchment, should a new incursion of pest fish occur.	\$5.3 million	\$5.3 million
<b>Orange Agricultural Institute Upgrade</b>		
The project will upgrade facilities at the Orange Agricultural Institute following damage caused by a natural disaster. The facilities include houses, administration buildings, the State Emergency Centre, sheds and glasshouses.	\$4.8 million	\$4.8 million

Table 2.16: Key Regional NSW projects continuing in this Budget

Project	Estimated total cost	Expenditure over four years to 2027-28
<b>World-Class Food and Fibre</b>		
Enhancements to research stations (including glasshouses, exotic disease diagnostic instruments and on-farm sensors and data technology) will work towards boosting agricultural productivity and support world class food and fibre production.	\$104.0 million	\$19.0 million
<b>R&amp;D partnership with the Grain Research and Development Corporation</b>		
The 2017 Research and Development Partnership with the Grains Research Development Corporation is a 10 year contracted partnership that will enhance productivity of plant and livestock systems.	\$22.0 million	\$9.2 million
<b>Foot and Mouth Disease – Risk and Response</b>		
The program supports urgent operations and response capacity and enables broader surge response capability for Foot and Mouth Disease preparedness and management. This capital investment includes facilities and equipment, including an effluent decontamination and sterilisation system, main water reservoirs back-up system, data transmission improvements, and sensor-activated automatic wheel and truck wash facilities at key handling sites.	\$14.3 million	\$0.4 million
<b>Offshore Artificial Reefs</b>		
Involves construction of multi-component, purpose-built artificial reefs off the NSW coast to provide significant returns on investment through new fishing tourism opportunities in addition to ecological benefits. The reefs enhance fishing and tourism opportunities, by creating additional habitat for local aquatic organisms and fish such as Kingfish, Trevallies, Snapper, Flathead, Whiting and Morwongs species.	\$8.8 million	\$2.4 million

Pages 4-49 to 4-50 of Chapter 4 of this *Infrastructure Statement* list the major capital projects and minor works for the Regional NSW agencies, including the ETC, estimated expenditure to 30 June 2024, and 2024-25 allocation.

Page 4-62 Chapter 4 of this *Infrastructure Statement* list the major capital projects accounted for by delivery agencies as inventory, including the ETC, estimated expenditure to 30 June 2024, and 2024-25 allocations.

## 2.9 Transport



Transport plays a key role in making New South Wales a better place to live, work and visit by connecting people and communities. Integrated transport networks including road, train, metro, bus, ferry, light rail, cycling and walking are critical for driving economic growth, wellbeing, and creating vibrant precincts and cities.

\$62.9  
billion

Capital  
Expenditure  
to 2027-28

\$17.6  
billion

Capital  
Expenditure  
2024-25

The Transport capital program includes a \$62.9 billion investment over the four years to 2027-28, including major investment in Sydney's transformational Metro projects and regional roads and rail fleet.

### Box 2.15: Parramatta Light Rail Stage 2 Progress

The NSW Government has provisioned an additional \$2.1 billion to deliver Parramatta Light Rail Stage 2, to build better connected communities in Sydney's growing west. The budget also commits \$73.0 million to update the Final Business Case for the project.

The 2024-25 Budget paves the way to start construction on this essential project in this term of government. This investment follows state and planning approvals granted earlier this year.

The proposed Parramatta Light Rail Stage 2 would connect Parramatta's CBD to Sydney Olympic Park via Camellia, Rydalmere, Ermington, Melrose Park and Wentworth Point. This vital project would support housing growth and better connect communities in Western Sydney.

Table 2.17: Key new Transport projects commencing in 2024-25 included in this Budget

Project	Estimated total cost	Expenditure over four years to 2027-28
<b>Elizabeth Drive Upgrades</b>		
Delivering priority sections of Elizabeth Drive including safety improvements (includes \$200.0 million from Urban roads Fund). This is a key corridor providing access to Western Sydney International Airport (NSW and Australian Government funded).	n.a.	\$661.0 million
<b>Mamre Road - Erskine Park Road to Kerrs Road</b>		
Widening Mamre Road between Erskine Park Road to Kerrs Road with upgrades to key existing and future intersections (NSW and Australian Government funded).	n.a.	\$605.5 million
<b>Tangara Fleet Life Extension</b>		
Extending the life of the Tangara Fleet to operate until 2036, beyond the extended design life in 2028, to resolve obsolescence, ageing, safety and customer experience issues. This will enable a longer term replacement to come online with >50 per cent local manufacturing content.	n.a.	\$441.5 million
<b>New Bus Services for Western Sydney</b>		
Delivering new bus services which will connect Liverpool, Penrith & Campbelltown to the Western Sydney International Airport and Bradfield City (NSW and Australian Government funded).	n.a.	\$327.1 million

Project	Estimated total cost	Expenditure over four years to 2027-28
<b>Widen Richmond Road from the M7 to Townson Road</b>		
Widening a 2.2 kilometre section of Richmond Road between the M7 Motorway and Townson Road and building a new off-ramp bridge to connect Richmond Road to Westlink M7 (includes \$285.0 million from Urban Roads Fund). The upgrade will improve access to the existing Marsden Park Industrial precinct and future commercial and residential developments in the Marsden Park North precinct (NSW and Australian Government funded).	n.a.	\$316.6 million
<b>Upgrade Garfield Road East</b>		
Upgrading a 3.4 kilometre section of Garfield Road, between Piccadilly Street, Riverstone and Windsor Road, Box Hill (includes \$100.0 million from Urban Roads Fund). The upgrade will improve safety and accessibility for the newly established communities of Grantham Farm and Box Hill travelling to the existing rail station at Riverstone (NSW and Australian Government Funded).	n.a.	\$276.3 million
<b>South West Sydney Roads (Planning)</b>		
Planning for the South West Sydney Roads program which will identify critical road upgrades needed to support growth areas including the Greater Macarthur, South West Sydney and Wilton (NSW and Australian Government funded).	n.a.	\$65.0 million
<b>Western Sydney Roads (Planning)</b>		
Planning for the key corridors in Western Sydney to support housing growth by ensuring that road infrastructure can keep pace with the current and future transportation needs of the rapidly expanding population of Western Sydney (NSW and Australian Government funded).	n.a.	\$30.0 million
<b>Eastern Ring Road and Badgerys Creek Road South (Planning)</b>		
Planning for the priority roads which form part of the Western Sydney Airport Precinct Road Network. This will improve access to new jobs and housing in the Aerotropolis (NSW and Australian Government funded).	n.a.	\$25.0 million
<b>Rail Fleet Strategy incl Future Fleet Tangara Replacement (Planning)</b>		
Delivering a business case for the Future Fleet Program to determine fleet asset lifecycle and local manufacturing and procurement options for the long term fleet pipeline, and design a modern, fit for purpose double deck suburban passenger train to replace Tangara and other fleet. This includes associated infrastructure and asset upgrades to support the new fleet so that it can operate anywhere on the Sydney Trains network.	n.a.	\$13.2 million
<b>Golden Highway Dubbo to Newcastle Improvement Program (Planning)</b>		
Delivering a business case for priority corridor solutions, including potential overtaking lanes and other improvements to also support ongoing renewable energy transition in regional NSW (NSW and Australian Government funded).	n.a.	\$10.0 million
<b>Hume Highway Corridor Strategy (Planning)</b>		
Delivering a corridor assessment and management strategy for the full length of the Hume Highway from Marulan to the Victorian Border (NSW and Australian Government funded).	n.a.	\$10.0 million

Project	Estimated total cost	Expenditure over four years to 2027-28
<b>Mount Ousley Safety and Reliability Works (Planning)</b>		
Undertaking development activities and preparing a business case to improve safety and resilience of the M1 Princes Motorway at Mount Ousley (NSW and Australian Government funded).	n.a.	\$10.0 million

### Box 2.16: Road Safety

The NSW and Australian Governments have committed \$2.8 billion (\$1.1 billion in capital funding) over the next four years towards Road Safety initiatives that will reduce fatalities and serious injuries on NSW roads. These initiatives will contribute to meeting the NSW Government's 2030 trauma reduction targets and the long-term goal of Towards Zero trauma on NSW roads. This funding will allow the NSW Government to continue delivering the commitments in the 2026 Road Safety Action Plan and improve safety for the NSW community.

Road safety is a high priority for the NSW Government and this significant investment demonstrates the Government's commitment to building and maintaining safer roads and reducing fatalities. On 22 February 2024, the NSW Government hosted the first ever NSW Road Safety Forum to lead the conversation on additional measures to address the significant increase in road fatalities experienced in 2023.

Table 2.18: Key State-wide Transport projects continuing in this Budget

Project	Estimated total cost	Expenditure over four years to 2027-28
<b>Zero Emissions Buses Program</b>		
Transitioning the state's 8,000 plus diesel and natural gas public transport buses to zero emissions technology to contribute to the delivery of the NSW Government's commitment to achieve net zero emissions by 2050. This will also provide more comfortable journeys and liveable places for passengers and communities.	n.a.	\$1.9 billion
The program is being delivered in stages to allow local industry time to prepare, and technology advancements to be assessed and adopted along the way. Tranche 1 includes Australian Government funding for Macquarie Park Bus Depot.		
<b>Road Safety Investment</b>		
Continuing the Government's commitment to the Road Safety Action Plan to fund targeted and proven initiatives to improve road safety in New South Wales. The Towards Zero Safer Roads Program and Australian Government funded Road Safety works builds on existing investment in thousands of kilometres of audio-tactile line markings, wide centre lines, school safety infrastructure works, crash barriers in regional NSW and other life-saving infrastructure across the State.	n.a.	\$1.1 billion
<b>New Buses to cater for NSW Services</b>		
Procuring new buses to deliver reliable services across New South Wales.	n.a.	\$467.8 million

Project	Estimated total cost	Expenditure over four years to 2027-28
<b>Urban Roads Fund</b>		
Improving capacity on key road corridors in Sydney to support housing uplift and flood resilience (through Western Sydney Flood Resilience which is part of the URF) and smaller projects to reduce congestion on roads in local communities.		
<ul style="list-style-type: none"> <li>• \$118.2 million to plan and upgrade 1.8-kilometre section of Henry Lawson Drive Stage 1B between Auld Ave and the approach to the M5 Motorway. Widening of Henry Lawson Drive from 2 lanes to 4 lanes, intersection upgrades at Bullecourt Ave and Pozieres Ave, provision of new link roads between Auld Ave, Keys Parade, and Raleigh Road, and shared paths and footpaths.</li> </ul>		\$398.5 million *
<ul style="list-style-type: none"> <li>• \$99.3 million for Pitt Town Bypass</li> <li>• \$65.0 million to duplicate sections of Heathcote Road</li> <li>• \$50.0 million for the planning of Liverpool to Airport Transit Corridor</li> <li>• \$24.0 million for traffic lights at Elara Boulevard</li> <li>• \$15.0 million for Driftway Roundabout at Londonderry</li> <li>• \$14.7 million for planning the upgrade of Spring Farm Parkway Stage 2</li> <li>• \$4.8 million for the planning of pedestrian overpass at Hurstville Primary</li> <li>• \$3.5 million for traffic lights at Bank Street</li> <li>• \$2.5 million for the resurfacing of Canterbury Road</li> <li>• \$1.5 million for pedestrian safety barriers Blaxland</li> </ul>	n.a.	* Excludes projects that are partly funded through URF and are separately featured in other tables: Elizabeth Drive Upgrades, Upgrade Garfield Road East, Widen Richmond Road from the M7 to Townson Road; Upgrade of Bandon Road, Widen Richmond Road at Elara Boulevard
<b>Pinch Points</b>		
Continuing NSW and Australian Government funded investment in small scale traffic improvements that provide big benefits to customers, including reduced congestion and travel times.	n.a.	\$245.4 million
<b>Regional Roads Fund</b>		
The Regional Roads Fund is used to build new roads in rural and regional areas including:		
<ul style="list-style-type: none"> <li>• \$39.8 million for the planning and design of Gosford Bypass</li> <li>• \$18.9 million to investigate the extension of Memorial Drive to provide a potential bypass of the Bulli town centre</li> <li>• \$18.5 million for signalling at the Yass, Bungendore, and Ellerton Drive roundabout intersection</li> <li>• \$14.5 million towards the Thornton rail bridge duplication</li> <li>• \$11.8 million for improvements on Golden Highway, including an overtaking lane approaching Merriwa</li> <li>• \$9.0 million for planning for potential additional entry and exit ramps to connect motorists in Dapto to the M1 Princes Motorway</li> <li>• \$7.5 million for Alphadale Crossroads intersection on the Bruxner Highway to improve driver safety at the turnoff from the Princess Highway into Tuross Head</li> <li>• \$6.0 million additional funding for the Speers Point intersection upgrade, bringing total funding to \$8.8 million</li> <li>• \$1.4 million for planning for the southern left-hand slip lane.</li> </ul>	n.a.	\$125.1 million

Project	Estimated total cost	Expenditure over four years to 2027-28
<b>Active Transport</b>		
Developing and delivering projects that expand connected cycleway networks, which increase opportunities for cycling and walking in and around connected centres. Active Transport projects encourage more people to choose walking and cycling as modes of transport.	n.a.	\$120.9 million
<b>Maritime infrastructure upgrades</b>		
Upgrading ferry wharves to improve accessibility and continuing ongoing maintenance and upgrades to various regional maritime assets.	n.a.	\$79.0 million* *Excludes Kamay Ferry Wharves

Table 2.19: Key Sydney Metropolitan Transport projects continuing in this Budget

Project	Estimated total cost	Expenditure over four years to 2027-28
<b>Sydney Metro West</b>		
Delivering a new metro line connecting Greater Parramatta with the Sydney CBD. The line will include metro stations at Westmead, Parramatta, Sydney Olympic Park, North Strathfield, Burwood North, Five Dock, The Bays, Pyrmont and Hunter Street in the Sydney CBD.	n.a.	\$13.4 billion
<b>Sydney Metro – Western Sydney Airport</b>		
Delivering six new metro stations to service the future Western Sydney International (Nancy-Bird Walton) Airport and the Western Sydney Aerotropolis, interchanging with the T1 Western Line at St Marys (NSW and Australian Government funded).	n.a.	\$5.5 billion
<b>Western Harbour Tunnel Upgrade</b>		
Continuing the delivery of the first stage of tunnelling works for a new crossing of Sydney Harbour. The first package will include construction of 1.7 kilometres of mainline tunnels from Rozelle to Birchgrove. The second package includes construction of northern tunnels from Birchgrove, through Sydney Harbour and onto North Sydney, the marine work and all the tunnel fit-out.	n.a.	\$4.2 billion
<b>Rail Service Improvement Program</b>		
Continuing the program to simplify and modernise the rail network and integrate Sydney Metro City and Southwest with Sydney's train network. Customers can expect more frequent train services with shorter wait times and reduced crowding, including additional services on the Illawarra, Airport and South Coast lines.	n.a.	\$1.9 billion
<b>Sydney Metro City and Southwest</b>		
Delivering an extension of Metro North West Line from Chatswood, under Sydney Harbour, through new CBD stations and southwest to Bankstown. The line will include metro stations at Crows Nest, Victoria Cross (North Sydney), Barangaroo, Martin Place, Pitt Street and Waterloo, new metro platforms at Central and Sydenham stations, and 10 upgraded stations between Marrickville and Bankstown.	n.a.	\$1.2 billion

Project	Estimated total cost	Expenditure over four years to 2027-28
<b>Connecting Sydney Roads</b>		
Upgrading the Sydney road network to support population and employment growth in Sydney. Key projects include:		
<ul style="list-style-type: none"> <li>• \$225.0 million for Mulgoa Road Stage 2 – Glenmore Parkway to Jeanette Street (NSW and Australian Government funded)</li> <li>• \$151.3 million for The Horsley Drive, M7 motorway to Cowpasture Road (NSW and Australian Government funded)</li> <li>• \$149.5 million (\$75.0 million from Urban Roads Fund) for Upgrade of Bandon Road (Planning) (NSW and Australian Government funded)</li> <li>• \$147.2 million for Appin Road Upgrades (NSW and Australian Government funded)</li> <li>• \$129.1 million for Mulgoa Road Stage 1 – Blaikie Road to M4 Motorway (NSW and Australian Government funded)</li> <li>• \$127.2 million for Western Sydney Long Term Strategic Transport Corridor Preservation</li> <li>• \$102.6 million for Spring Farm Parkway Stage 1.</li> <li>• \$72.4 million for Wakehurst Parkway</li> <li>• \$5.5 million for Mona Vale Road, McCarrs Creek Road to Powder Works Road.</li> </ul>	n.a.	\$1.1 billion*
<p>* Note figure excludes projects that are featured in other tables: Elizabeth Drive Upgrades, Mamre Road -Erskine Park Road to Kerrs Road, Widen Richmond Road from the M7 to Townson Road, Upgrade Garfield Road East; New Richmond Bridge and Traffic Improvements, Mamre Road, M4 Motorway to Erskine Park Road, Widen Richmond Road at Elara Boulevard, Epping Station Bridge Replacement, Hill Road Upgrade, King Georges Road, Stoney Creek Road to Connells Point Road, Homebush Bay Drive Upgrade, Heathcote Road, Infantry Parade, Hammondville to The Avenue, Voyager Point, Henry Lawson Drive Upgrade Stage 1A, Prospect Highway, Reservoir Road to St Martins Crescent, Memorial Avenue, Old Windsor Road to Windsor Road, Heathcote Road - The Avenue to Princes Highway; Picton Bypass</p>		
<b>Warringah Freeway Upgrade</b>		
Continuing upgrades of the Warringah Freeway for surface roads, bridges and interchanges along 4 kilometres of the freeway corridor, which started in early 2022.	\$2.0 billion	\$788.0 million
<b>M6 Extension Stage 1</b>		
Continuing the extension works which will remove more than 2,000 trucks a day from surface roads, enable motorists to bypass up to 23 sets of traffic lights on the Princes Highway and enhance pedestrian and cyclist safety through shared pathways.	\$3.1 billion	\$705.5 million
<b>The M12 Motorway</b>		
Continuing to deliver a new motorway as part of the Western Sydney Infrastructure Plan. The project, funded by the NSW and Australian Governments, will provide direct access to the Western Sydney International (Nancy-Bird Walton) Airport, running east to west, linking the M7 Motorway, The Northern Road and Elizabeth Drive. It will also improve the freight movement in and through Western Sydney.	\$2.0 billion	\$607.9 million
<b>Safe, Accessible Transport Program</b>		
Continuing to deliver and develop upgrades to stations to achieve Disability Standards for Accessible Public Transport (DSAPT) compliance, improving amenity, access and safety.	n.a.	\$547.5 million
<b>Parramatta Light Rail Stage 2</b>		
The first stage is the delivery of a new public and active transport bridge over Parramatta River between Wentworth Point and Melrose Park, including approaches on either side of the river – totalling 1.3km (Enabling Works).	n.a.	\$475.1 million



Project	Estimated total cost	Expenditure over four years to 2027-28
<b>New Richmond Bridge and Traffic Improvements</b>		
Providing a new bridge over the Hawkesbury River between Richmond and North Richmond. The project will deliver journey time reliability, safer connections along the road corridor and improve flood resilience (NSW and Australian Government funded).	n.a.	\$377.2 million
<b>Circular Quay Precinct Renewal (Planning)</b>		
Commitment to upgrade the promenade and ferry wharves at Circular Quay to make them compliant with modern accessibility standards. Renewal of the promenade will remove the current load limits and associated restrictions on emergency service access to the precinct. The Australian Government funding is for land transport assets only (NSW and Australian Government funded).	n.a.	\$303.9 million
<b>Sydney Gateway</b>		
Expanding and improving the existing road and freight rail networks to provide a new route for around 10,000 trucks a day. This will divert trucks from local streets in Mascot by providing an alternate route, thereby reducing travel times and congestion, and returning local streets back to the community.	\$2.6 billion	\$272.4 million
<b>M5 Motorway, Moorebank Avenue and Hume Highway Intersection Upgrade</b>		
Delivering the M5 Westbound Traffic Upgrade to provide a new two-lane bridge over Georges River and rail line, and a new underpass at Moorebank Avenue. These upgrades will reduce congestion and improve travel times, accessibility and connectivity of road networks (NSW and Australian Government funded).	n.a.	\$263.1 million
<b>Mamre Road, M4 Motorway to Erskine Park Road</b>		
Widening 3.8 kilometres of Mamre Road, between the M4 Motorway and Erskine Park Road, from a two-lane undivided road to a four-lane divided road, with provision for two additional lanes in the future. This upgrade will provide a safer and higher capacity link.	n.a.	\$249.5 million
<b>Parramatta Light Rail Stage 1</b>		
Continuing construction of the Light Rail from Westmead to Carlingford via the Parramatta CBD and Camellia with a 12-kilometre two-way track, to support growth in Western Sydney, connecting new communities and places. The Light Rail is estimated to service 28,000 people every day with an estimated 130,000 people living within walking distance of light rail stops.	\$2.9 billion	\$210.6 million
<b>Widen Richmond Road at Elara Boulevard</b>		
Upgrading a 0.9 kilometre section of Richmond Road, north of Elara Boulevard (includes \$100.0 million from Urban Roads Fund). The upgrade will provide safer and improved access to fast growing residential developments in the Marsden Park precinct and future commercial and residential developments in the Marsden Park North precinct (NSW and Australian Government funded).	n.a.	\$156.5 million
<b>Epping Station Bridge Replacement</b>		
Replacing the Epping Road Bridge over rail near Epping Train Station to provide an additional westbound lane, central median and wider footpaths (NSW and Australian Government funded).	n.a.	\$121.5 million

Project	Estimated total cost	Expenditure over four years to 2027-28
<b>Hill Road Upgrade (at Sydney Olympic Park and Lidcombe)</b>		
Upgrading Hill Road between Parramatta Road and Old Hill Link Road to improve connectivity to Carter Street Precinct and Sydney Olympic Park.	n.a.	\$120.3 million
<b>King Georges Road, Stoney Creek Road to Connells Point Road</b>		
Widening King Georges Road from two lanes to three lanes in each direction and constructing a dedicated right turn lane for south bound motorists turning into Percival Street. The upgrade will benefit an estimated 43,000 motorists by reducing congestion, improving travel times and boosting safety for all users (NSW and Australian Government funded).	\$190.6 million	\$98.8 million
<b>Macquarie Park Precinct and Bus Interchange</b>		
Upgrading the Macquarie Park precinct and bus interchange will help connect people to Macquarie University, Macquarie Centre, Macquarie Business Park and residential and commercial areas. The upgrade will improve travel efficiency and connectivity, making it easier for people to move safely into and around Macquarie Park (NSW and Australian Government funded).	n.a.	\$97.3 million
<b>Homebush Bay Drive</b>		
Upgrading the intersection of Homebush Bay Drive, Australia Avenue and Underwood Road. The project will ease congestion, increase safety and improve travel times to Homebush and Sydney Olympic Park (NSW and Australian Government funded).	n.a.	\$90.9 million
<b>Western Distributor Smart Motorway</b>		
Delivering technology improvements along the Western Distributor corridor between the Sydney Harbour Bridge and Anzac Bridge to provide an improved and smoother driving experience (NSW and Australian Government funded).	n.a.	\$89.5 million
<b>Heathcote Road, Infantry Parade Hammondville to the Avenue, Voyager Point</b>		
Widening and upgrading a 2.2 kilometre section of Heathcote Road between Infantry Parade and The Avenue to a four-lane divided road, and upgrading intersections at Heathcote Road and The Avenue, and at Heathcote Road and Macarthur Drive. The project also duplicates the existing bridges at Harris Creek, Williams Creek and over the railway line, as well as providing active transport connections along Heathcote Road (NSW and Australian Government funded).	\$183.0 million	\$76.4 million
<b>Henry Lawson Drive Upgrade Stage 1A</b>		
Continuing construction of Stage 1A which involves widening between Tower Road, Georges Hall and Auld Avenue, Milperra to double capacity and reduce congestion.	\$136.0 million	\$67.9 million
<b>South West Sydney Rail Planning – Business Case</b>		
Developing a business case for potential future rail connections between Bradfield and Leppington/Glenfield, and between Bradfield and Campbelltown/Macarthur (NSW and Australian Government funded).	n.a.	\$65.0 million

Project	Estimated total cost	Expenditure over four years to 2027-28
<p><b>Prospect Highway, Reservoir Road to St Martins Crescent</b></p> <p>Continuing the upgrade of a 3.6 kilometre section of the Prospect Highway between Reservoir Road, Prospect and St Martins Crescent, Blacktown to a four-lane divided carriageway. The section north of Lancelot Street will be upgraded to a six-lane divided road, inclusive of two dedicated bus lanes, and improvements will be made to 11 intersections along the route. The upgrade will improve road safety for all road users, reduce congestion leading to improved travel times, and increase network efficiency (NSW and Australian Government funded).</p>	\$280.0 million	\$59.3 million
<p><b>Memorial Avenue, Old Windsor Road to Windsor Road</b></p> <p>Upgrading Memorial Avenue to a four-lane road (with allowance for future widening to six lanes) to meet the future transport demands of Sydney's north-west, reducing travel times and congestion for motorists and improving safety as part of the Western Sydney Growth Roads Program (NSW and Australian Government funded).</p>	n.a.	\$48.2 million
<p><b>Sydney Metro – Western Sydney Airport – Northern extension – Business Case</b></p> <p>Developing a business case for a potential future rail connection between St Marys and Tallawong.</p>	n.a.	\$40.0 million
<p><b>Heathcote Road – The Avenue to the Princes Highway (Planning)</b></p> <p>Continuing planning and development for the duplication of approximately 18 kilometres of Heathcote Road between The Avenue at Voyager Point and Princes Highway at Engadine. The upgrade will increase capacity and create a safer environment.</p>	n.a.	\$31.0 million
<p><b>Parramatta Class ferries</b></p> <p>Procuring seven new Australian made, NSW designed Parramatta Class ferries. This ferry purchase program allows the gradual retirement of the seven RiverCat ferry fleet while maintaining service levels.</p>	n.a.	\$19.1 million
<p><b>Kamay Ferry Wharves</b></p> <p>Reinstating multi-user wharves at La Perouse and Kurnell. This will provide better access to the Kurnell Precinct and facilities for recreational vessels and fishing.</p>	\$78.0 million	\$15.1 million

### **Box 2.17: Western Sydney Airport Precinct – Multimodal Connectivity**

The Western Sydney Aerotropolis is set to become a thriving economic centre, creating new jobs and opportunities for the people of Western Sydney. Located around the new Western Sydney International Airport, the Aerotropolis will benefit from multimodal connectivity with new metro, bus and road projects.

#### **Metro Projects**

Sydney Metro – Western Sydney Airport rail line will be an important transport spine for the new Western Sydney International (Nancy-Bird Walton) Airport. The project is jointly funded by the Australian and NSW Governments and is set to be open when Western Sydney International Airport opens for passenger services.

Currently in construction, the 23 kilometre line will connect Bradfield City Centre to St Marys, where customers can connect to the Sydney Trains T1 Western Line. The line will connect Western Sydney residents to greater job opportunities, health and education services, and leisure activities via a fast, safe, and user-friendly metro service with six new stations. As of May 2024, Sydney Metro – Western Sydney Airport project has involved 7,763 workers with 54 per cent from Greater Western Sydney, as well as 108 apprentices. Once operational, the line is expected to take about 110,000 vehicles off local roads every day, significantly reducing local traffic.

To inform future investment priorities in the region, this budget allocates funding for business cases for a northern extension (St Marys and Tallawong) and a southern extension (Bradfield to Campbelltown/Macarthur and Bradfield to Leppington/Glenfield).

#### **Bus Services**

The Australian Government has added \$100.0 million to the State's \$241.9 million capital commitment for bus services for Western Sydney, linking the communities of Campbelltown, Penrith and Liverpool to the new Airport. The funding will deliver critical infrastructure and services, the procurement of additional Zero Emission Buses (ZEB) and construction of a new ZEB depot for 100 buses. Service frequency and hours of operation will increase, and new local bus routes will be introduced to provide public transport to unlock housing and access to jobs in new precincts.

#### **Road Projects**

The NSW Government is investing over \$1.0 billion in this budget for Aerotropolis roads as part of its \$5.2 billion Western Sydney roads program. With matching funding from the Australian Government, the NSW Government will deliver an upgrade to Mamre Road Stage 2 for \$1.0 billion and widening of Elizabeth Drive for \$800.0 million. The NSW and Australian Governments have jointly committed \$25.0 million to support the development of a business case for the Eastern Ring Road and Badgerys Creek Road. The Eastern Ring Road and Badgerys Creek Road form part of the Airport Precinct road network that supports the airport operations, enables public and active transport, and provides direct access to new employment areas.

**Box 2.18: Connecting Sydney Roads**

Connecting Sydney Roads includes projects being delivered to address bottlenecks, re-connect communities and improve safety for road users across Greater Sydney. Funding will contribute towards key Sydney Roads upgrades including:

- **Picton Bypass (Planning):** The development of Picton Bypass will provide an alternate route for heavy vehicles, by linking Thirlmere and Tahmoor with Hume Motorway via Picton Road. The project will see a reduction in traffic congestion, improved safety and journey reliability (NSW and Australian Government funded)
- **Epping Station Bridge Replacement:** The replacement of Epping Station Bridge will include an additional westbound traffic lane, an additional right turn lane southbound onto Blaxland Road and a pedestrian and bicycle shared path. The upgrades will ease congestion, reduce travel times and improve safety for road users (NSW and Australian Government funded)
- **Hill Road Upgrade (at Sydney Olympic Park and Lidcombe):** The project will support future development growth in the Carter Street Precinct and connectivity to Sydney Olympic Park, Wentworth Point, Newington and Lidcombe, and access to Parramatta Road and the M4 Motorway off ramp to Hill Road
- **Mamre Road Upgrade (M4 Motorway to Erskine Park Road):** Stage 1 of the project will deliver an upgrade of 3.8 kilometres of Mamre Road between M4 Motorway, St Clair and Erskine Park Road, Erskine Park to a four-lane divided road. The upgrade will support future economic and residential growth in Western Sydney and improve road safety and movement between the M4 Motorway and Erskine Park Road
- **Mamre Road - Erskine Park Road to Kerrs Road (State and Federal Funded):** This second stage to upgrade Mamre Road is to widen between Erskine Park Road and Kerrs Road with upgrades at key existing and future intersections (NSW and Australian Government funded)
- **Mulgoa Road Upgrade (Glenmore Parkway to Jeanette Street, Regentville):** Stage 2 of the Mulgoa Road project includes upgrading to a six-lane divided road, shared user path and upgrade Glenmore Parkway intersection. The project will support expected growth in the area, improve road safety, reduce congestion and improve travel times (NSW and Australian Government funded)
- **Prospect Highway Upgrade:** The upgrade will include duplicating the bridges over the M4 Motorway and Great Western Highway, upgrading to a four-lane divided road, new traffic lights, installing kerbside bus lanes, modifying intersections to provide a roundabout and a new two-way link road between Great Western Highway and Prospect Highway. This project will improve safety and access for road users, improve travel times and reduce congestion, support public transport with kerbside bus lanes and support freight movement (NSW and Australian Government funded)
- **Elizabeth Drive Upgrades:** The project will deliver upgrades at priority sections of Elizabeth Drive including safety improvements. This is a key corridor providing access to the Western Sydney International Airport (NSW and Australian Government funded)
- **Memorial Avenue, Old Windsor Road to Windsor Road:** This project will upgrade Memorial Avenue to a four-lane road (with allowance for future widening to six lanes) to meet the future transport demands of Sydney's north-west, reducing travel times and congestion for motorists and improving safety as part of the Western Sydney Growth Roads Program (NSW and Australian Government funded)

**Box 2.18 Connecting Sydney Roads (cont)**

- **Widen Richmond Road from the M7 to Townson Road:** This project will widen a 2.2 kilometre section of Richmond Road between the M7 Motorway and Townson Road and will include a new off-ramp bridge to connect Richmond Road to Westlink M7. The upgrade will improve access to the existing Marsden Park Industrial precinct and future commercial and residential developments in the Marsden Park North precinct (NSW and Australian Government funded)
- **Garfield Road East:** The project will upgrade a 3.4 kilometre section of Garfield Road, between Piccadilly Street, Riverstone and Windsor Road, Box Hill. The upgrade will improve safety and accessibility for the newly established communities of Grantham Farm and Box Hill travelling to the existing rail station at Riverstone (NSW and Australian Government Funded).

Table 2.20: Key Regional and Outer Metro Transport projects continuing in this Budget

Project	Estimated total cost	Expenditure over four years to 2027-28
<p><b>Pacific Highway Corridor - M1 to Raymond Terrace and Hexham Straight Widening</b></p> <p>Continuing main works construction of the upgrade to connect the M1 Pacific Motorway and the Pacific Highway, and major construction on the Hexham Straight Upgrade between Newcastle Inner City Bypass and Hexham Bridge (NSW and Australian Government funded).</p>	\$2.2 billion	\$1.4 billion
<p><b>Regional Rail Fleet</b></p> <p>Delivering a modern Regional Rail Fleet to replace the ageing XPT, XPLOER and Endeavour trains and improve travel.</p>	n.a.	\$1.2 billion
<p><b>Princes Highway Corridor Upgrade</b></p> <p>Continuing investments for priority projects including:</p> <ul style="list-style-type: none"> <li>• Jervis Bay Road Intersection Upgrade, to improve safety, reduce congestion and improve access to local roads (NSW and Australian Government funded)</li> <li>• Jervis Bay to Sussex Inlet Upgrade (Stage 1) between Jervis Bay Road and Hawken Road (NSW and Australian Government funded)</li> <li>• Milton-Ulladulla Bypass to improve safety, journey times and freight efficiency (NSW and Australian Government funded)</li> <li>• Princes Highway Safety and Freight Productivity Upgrades.</li> </ul>	n.a.	\$1.1 billion
<p><b>Mariyung Fleet (New Intercity Fleet)</b></p> <p>Delivering a new, state of the art fleet and associated power supply upgrades to provide a new level of comfort and convenience and improve accessibility and safety for customers who travel between Sydney, the Central Coast and Newcastle, the Blue Mountains and the South Coast.</p>	n.a.	\$973.8 million
<p><b>Pacific Highway Corridor - Coffs Harbour Bypass</b></p> <p>Continuing the Pacific Highway upgrade program to improve connectivity, road transport efficiency and safety for local and interstate motorists (NSW and Australian Government funded).</p>	\$2.2 billion	\$926.0 million
<p><b>Newell Highway Corridor Upgrade</b></p> <p>Continuing the delivery of Parkes bypass, new Dubbo Bridge, heavy duty pavement upgrades, and investigations to develop and deliver flood mitigation solutions on the Newell Highway between West Wyalong and Forbes (NSW and Australian Government funded).</p>	n.a.	\$432.2 million

Project	Estimated total cost	Expenditure over four years to 2027-28
<b>New England Highway Corridor – Singleton Bypass</b>		
Commencing main works construction of the bypass for Singleton to improve traffic flow, travel times and safety for motorists (NSW and Australian Government funded).	\$700.0 million	\$462.9 million
<b>New England Highway Corridor Upgrade</b>		
Continuing planning and early work activities for the Muswellbrook bypass to improve travel times for long-haul freight movements and safety for all road users on the New England Highway, as well as planning for Goonoo Goonoo Road in Tamworth. (NSW and Australian Government funded).	n.a.	\$392.9million
<b>Mount Ousley Interchange</b>		
Commencing major construction of the interchange to replace the existing intersection of the M1 Princes Motorway and Mount Ousley Road at the base of Mount Ousley (NSW and Australian Government funded).	\$390.0 million	\$293.8 million
<b>Newcastle Inner City Bypass from Rankin Park to Jesmond</b>		
Continuing construction of the final stage of the Newcastle Inner City Bypass between the Pacific Highway at Bennetts Green and the final stage of the Pacific Highway at Sandgate (NSW and Australian Government funded).	\$481.9 million	\$232.7 million
<b>Wyong Town Centre</b>		
Continuing planning and commencing early works for the upgrade of the Pacific Highway through Wyong Town Centre (NSW and Australian Government funded).	n.a.	\$216.3 million
<b>Great Western Highway – Medlow Bath and Coxs River Road</b>		
Continuing construction of the duplication of 1.1 kilometres of the Great Western Highway through Medlow Bath, and duplication on the Little Hartley to Lithgow section of the Great Western Highway at Coxs River Road (NSW and Australian Government funded).	n.a.	\$200.3 million
<b>Barton Highway Upgrade</b>		
Continuing improvements on the Barton Highway to improve road safety while enhancing tourism, driving economic growth and creating vibrant regional spaces (NSW and Australian Government funded).	n.a.	\$138.7 million
<b>Picton Road Upgrade (Planning)</b>		
Continuing planning the upgrade of Picton Road to improve safety and connectivity as a key link for the Illawarra Region, South Coast, Sydney, Canberra and Melbourne (NSW and Australian Government funded).	n.a.	\$89.3 million
<b>Fixing Country Rail Program</b>		
Providing improved capacity, access, efficiency and reliability of the regional rail network, as well as delivering a highly functional transport network for moving freight in and out of regional areas.	n.a.	\$66.2 million
<b>Mandalong Road Upgrade</b>		
Continuing planning for the Mandalong Road upgrade (NSW and Australian Government funded).	n.a.	\$59.4 million
<b>Central Coast Highway, Tumby Road Intersection Upgrade</b>		
Finalise planning and continue pre-construction of the Central Coast Highway, Tumby Road Intersection Upgrade (NSW and Australian Government funded).	n.a.	\$38.9 million

Project	Estimated total cost	Expenditure over four years to 2027-28
<b>Bells Line of Road Upgrade Program</b>		
Continuing development and delivery of safety upgrades to enable a safer journey on the scenic route between the Blue Mountains and Richmond (Australian Government funded).	n.a.	\$36.4 million
<b>Hume Highway Upgrade</b>		
Continuing pavement surface upgrades on the Hume Highway at Marulan.	n.a.	\$22.5 million
<b>Waterfall Way Upgrade</b>		
Upgrading sections of Waterfall Way to improve safety, reliability and travel times, and addressing safety for pedestrians and traffic in the Dorrigo town centre.	\$50.0 million	\$21.3 million
<b>Marshalls Creek Bridge</b>		
Widening the Sturt Highway to four lanes over Marshalls Creek Bridge to improve safety and ease congestion on the highway through Wagga Wagga.	n.a.	\$20.9 million
<b>Picton Bypass (Planning)</b>		
Planning for the Picton Bypass that would provide an alternative route for heavy vehicles by linking Thirlmere and Tahmoor with the Hume Motorway via Picton Road.	n.a.	\$18.3 million



**Box 2.19: Pacific Highway, Extension to Raymond Terrace and Hexham Straight**

The Australian and NSW Governments are funding the 15 kilometre M1 Pacific Motorway extension to Raymond Terrace project with a commitment of \$2.2 billion. The extension will boost the regional economy and improve connectivity, road transport efficiency and safety for local and interstate motorists.

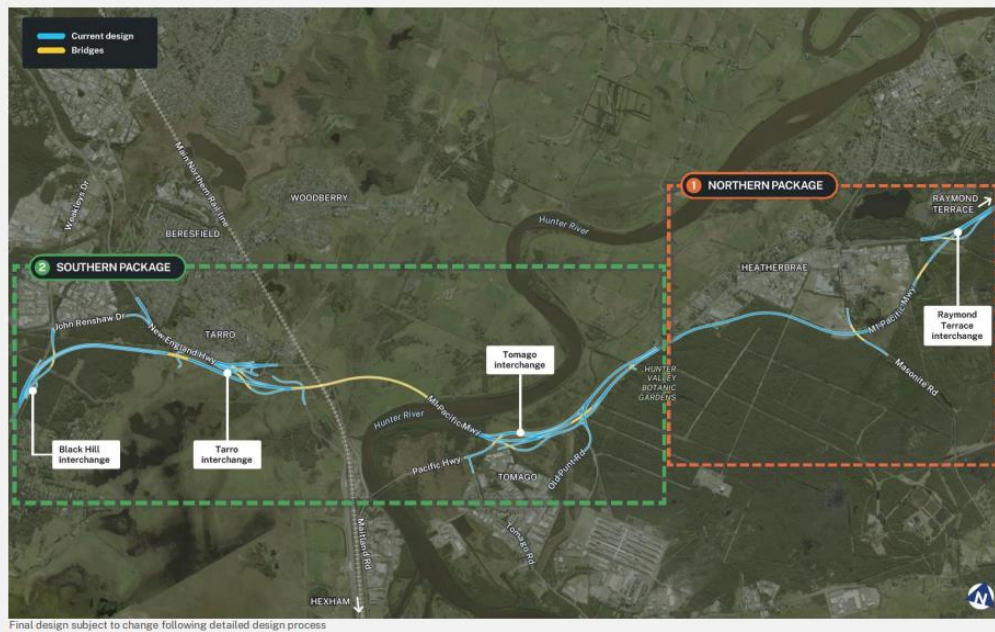
The project addresses a key national motorway ‘missing link’ between Sydney and Brisbane as the existing M1 Pacific Motorway, New England Highway and Pacific Highway carry some of the highest traffic volumes across the Hunter.

The 15 kilometre extension of the motorway will feature: removal of five sets of traffic lights and cutting nine minutes from travel times during peak periods. It will also deliver a 2.6 kilometre viaduct over the Hunter River and floodplain, the Main North Rail Line, and the New England Highway. Additionally, there will be new bridge crossings over local waterways at Tarro and Raymond Terrace, and an overpass for Masonite Road at Heatherbrae.

The upgrade will:

- improve connection between the M1 Pacific Motorway and the Pacific Highway
- improve traffic flow for motorists and freight for more reliable travel times
- improve accessibility to the surrounding road network
- improve safety for all road users.

Figure 2.5: Pacific Highway, Extension to Raymond Terrace and Hexham Straight



### Box 2.20: Singleton Bypass

The Australian and NSW Governments have committed \$700.0 million to build the Singleton Bypass to improve travel times, freight efficiency and safety for local and interstate motorists.

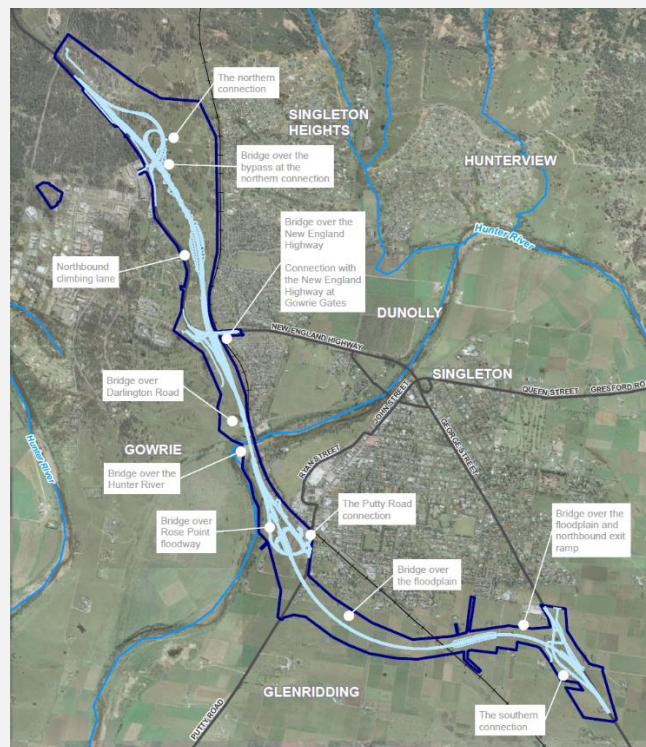
The New England Highway is part of the inland Sydney to Brisbane National Land Transport Network and the primary route connecting the Upper Hunter with Maitland and Newcastle. The highway passes through the centre of Singleton and carries around 26,000 vehicles, including more than 3,700 heavy vehicles, each day.

The 8-kilometre project will bypass five sets of traffic lights and include a 1.8 km bridge over the Main Northern Railway, Doughboy Hollow and Hunter River floodplains.

The bypass will provide:

- improved traffic flow for motorists for more reliable travel times on the New England Highway, particularly for road freight
- improved road safety for through and local traffic in the town centre
- improved amenity of Singleton by providing an alternative route for heavy vehicles outside the town centre.

Figure 2.6: Singleton Bypass



### Box 2.21: Newcastle Inner City Bypass from Rankin Park to Jesmond

The Australian and NSW Governments have committed \$481.9 million to deliver the Rankin Park to Jesmond section of the Newcastle Inner City Bypass. The 3.4-kilometre bypass is being built between Rankin Park and Jesmond, to the west of John Hunter Hospital. The Rankin Park to Jesmond project is the fifth section of the Newcastle Inner City Bypass.

The project will provide traffic relief to the surrounding road network, in particular the existing route of Lookout Road, Croudace Street and Newcastle Road, which is currently being used by 40,000 to 60,000 vehicles each day. The new bypass will remove up to 30,000 vehicles each day from this route.

The bypass will provide:

- improved traffic flow for motorists for more reliable travel times
- improved accessibility to surrounding road networks and John Hunter Hospital
- improved safety for all road users.

Figure 2.7: Newcastle Inner City Bypass from Rankin Park to Jesmond



### **Box 2.22: Jervis Bay Road Intersection Upgrade**

The Australian and NSW Governments committed \$164.0 million to deliver the Jervis Bay Road intersection upgrade. The Jervis Bay Road and Princes Highway Intersection has the highest volume of vehicle movements on the highway between Nowra and the border with Victoria. A safer and more reliable intersection will support pedestrians, cyclists, and public transport customers to travel safely. The contract for major construction work was awarded in 2023 and major work is now under way.

The project includes:

- realignment of the existing Princes Highway, including widening from two lanes to a four-lane divided highway, with median separation using flexible safety barriers, providing an uninterrupted alignment for the Princes Highway
- an overpass bridge over Jervis Bay Road
- an unsignalised single-lane at-grade double roundabout interchange providing direct access to and from the Princes Highway
- shared user paths along Jervis Bay Road, connecting to the bus bay and Jervis Bay Road and Old Princes Highway Road shoulders
- a bus bay adjacent to the interchange, including kiss and ride car spots.

Pages 4-51 to 4-58 of Chapter 4 of this *Infrastructure Statement* list the major capital projects and minor works for the Transport agencies, including the ETC, estimated expenditure to 30 June 2024, and 2024-25 allocation.

## 2.10 Treasury (including Infrastructure NSW)



The Treasury capital program includes investment in its financial management system to support Treasury's economic and financial management responsibilities.

\$444.0  
million

Capital  
Expenditure  
to 2027-28

\$163.2  
million

Capital  
Expenditure  
2024-25

Infrastructure NSW is creating a sustainable infrastructure legacy for New South Wales by providing independent advice and assurance to government on the identification and prioritisation of critical public infrastructure and leading the development of nominated priority projects and precinct transformations.

Table 2.21: Key Treasury (including Infrastructure NSW) projects continuing in this Budget

Project	Estimated total cost	Expenditure over four years to 2027-28
<b>Barangaroo Precinct</b>		
Continue the transformation of the Barangaroo precinct including the delivery of a 1.85 hectare public park on Sydney Harbour, the fit-out of the Cutaway, a new public pavilion and other capital projects to enhance local amenity, along with ongoing sustainability, art and culture initiatives.	\$688.0 million	\$271.9 million

Pages 4-59 to 4-60 of Chapter 4 of this *Infrastructure Statement* list the major capital projects and minor works for the Treasury agencies, including the ETC, estimated expenditure to 30 June 2024, and 2024-25 allocation.

Page 4-62 Chapter 4 of this *Infrastructure Statement* list the major capital projects accounted for by delivery agencies as inventory, including the ETC, estimated expenditure to 30 June 2024, and 2024-25 allocations.